

Addendum No. 5 to

Master Work Plan/Field Sampling and Analysis  
Plan, Co-Located Chemical Sampling at Area IV  
Santa Susana Field Laboratory, Ventura County,  
California

EPA Subarea 6 Soil Sampling

*Prepared for:*

Department of Energy  
Energy Technology and Engineering Center  
P.O. Box 10300  
Canoga Park, California 91309

*Prepared by:*

**CDM** Federal Programs Corporation  
155 Pringle Avenue, Suite 300  
Walnut Creek, California 94596


*Prepared under:*

US Department of Energy  
EM Consolidated Business Center  
Contract DE-AM09-05SR22404  
CDM Task Order DE-AT30-08CC60021/ET17

July 2011

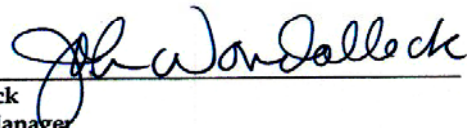
Addendum No. 5 to Master Work Plan/Field  
Sampling and Analysis Plan, Co-Located Chemical  
Sampling at Area IV Santa Susana Field Laboratory,  
Ventura County, California  
EPA Subarea 6 Soil Sampling

Contract DE-AM09-05SR22404  
CDM Task Order DE-AT30-08CC60021/ET17

Prepared by:   
Margaret Bloisa, P.G.  
CDM Geologist



7/7/11  
Date

Approved by:   
John Wondolleck  
CDM Project Manager

7/8/11  
Date

## Introduction

This document supports the field implementation of the soil sampling program addressed in the *Master Work Plan (WP)/Field Sampling and Analysis Plan (FSAP), Co-Located Chemical Sampling at Area IV, Santa Susana Field Laboratory* (Master WP/FSAP, CDM 2011). The Master WP/FSAP dictates the field sampling, analytical, quality control, and data review procedures for the collection and chemical analysis of soil samples within Area IV of the Santa Susana Field Laboratory (SSFL) and the Northern Buffer Zone (NBZ), collectively termed the Area IV study area. As part of a radiological characterization study, the United States Environmental Protection Agency (EPA) is collecting surface and subsurface soil samples throughout Area IV of SSFL and the NBZ for the presence of radioactive elements (radionuclides). The California Department of Toxic Substances Control (DTSC) and Department of Energy (DOE) requested that soil collected by EPA also be analyzed for chemical analytes. DTSC and DOE agreed that the chemical sampling be done by DOE's contractor, CDM Federal Programs Corporation (CDM).

## Purpose of Addendum

This addendum documents the rationale for the location of surface and subsurface chemical soil samples to be collected during Phase I of soil sampling within Subarea 6 as presented in EPA's *Subarea 6 FSP Addendum, Santa Susana Field Laboratory Site, Area IV Radiological Study*, (HGL 2011). Phase I soil sampling is based on EPA's Historical Site Assessment (HSA) of Subarea 6 (that also included a gamma survey, geophysical survey, and review of prior data) with sample locations selected by EPA to address concerns identified in the HSA. Phase II chemical sampling, which is not covered by this Addendum, will involve further chemical and radionuclide characterization "step-out" samples. The need for chemical "step-out" samples will be determined on a case-by-case basis following a review of all chemical data collected for Area IV.

Under the co-located soil sampling program, EPA and its consultant HydroGeoLogic, Inc. (HGL) will physically collect the soil material. CDM personnel will be responsible for the sample container preparation, sample handling and documentation, sample shipment, laboratory procurement, chemical analyses of the samples, and chemical data review. Co-located soil samples collected by CDM will be analyzed for chemical analytes as stipulated in Table 4-1 (Data Quality Objectives) and Table 6-1 (Analytical Methods, Containers, Preservatives, and Holding Times) of the Master WP/FSAP (CDM 2011).

Figure 1 is a layout of EPA's Subarea 6. The proposed sample locations are shown on Figures 2 through 6, which were taken from EPA's Subarea 6 FSP Addendum (HGL 2011). EPA's description and rationale for the soil sample locations in Subarea 6 are summarized in Table 1.

## De-Selection of Locations for Chemical Sampling

EPA's identified sample locations are based on radiological sampling needs as determined by EPA, and not on chemical sampling needs. The sampling protocol for targeting the depths of soil samples for chemical analyses are illustrated in Figures 5-1 and 5-2 of the Master WP/FSAP.

Soil samples for chemical analyses will not be collected from all locations identified in Subarea 6 by EPA for radionuclide analyses. Portions of the Subarea 6 study area that have been subject to prior investigations under the RFI include (but are not limited to) the:

- Sodium Reactor Experiment Complex (including Building 4003 [former Engineering Test Building] and Building 4143 [former Reactor Building])
- Building 4064 and various other support buildings and storage facilities.
- The SRE Pond and drainage
- The SRE leachfield
- The Old Conservation Yard, and
- The New Conservation Yard.

Several locations within Subarea 6 have adequate data for use in determining the need for a soil cleanup action. Locations with adequate data to identify "Clearly Contaminated Areas" were discussed with DTSC personnel on May 19, 2011 and with community stakeholders on June 15, 2011. On June 21, 2011 and DOE and DTSC jointly de-selected HGL sample locations for chemical sample collection using the following three "Sample/No Sample" decision criteria.

### **SCENARIO 1. "CLEARLY CONTAMINATED" AREA THAT WILL REQUIRE CLEANUP DISCRETIONARY SAMPLING CRITERIA**

The potential discretionary decision is to not collect chemical samples at some EPA locations where sufficient chemical data already exist to define the area as one that is clearly contaminated and will likely be remediated. Co-located sampling will still be conducted near the areas, as needed, to adequately define extent of contamination.

- a. "Clearly contaminated" are those areas that have been previously sampled and sampling results show detected chemical concentrations that obviously exceed current background and/or Method Reporting Limits (MRLs)
- b. There are a high frequency and number of chemical constituents that exceed background and MRLs
- c. DOE agrees to cleanup of contaminated area.

## **SCENARIO 2. HIGH DENSITY RADIOLOGICAL SAMPLING AREA DUE TO ELEVATED GAMMA SURVEY RESULTS DISCRETIONARY SAMPLING CRITERIA**

Potential discretionary decision: do not collect chemical samples at some EPA locations so that sample spacing is consistent with the RFI approach (approximately 50 to 100 feet).

- a. No known and/or identified chemical operations and/or releases (subject to field observations)
- b. Non-point source, no preferential pathways identified, open/flat area
- c. Site is sufficiently distant from known potential chemical sources.

## **SCENARIO 3. HIGH DENSITY RADIOLOGIC SAMPLING OF HISTORIC FEATURES DISCRETIONARY SAMPLING CRITERIA**

Potential discretionary decision: using professional judgment, do not collect chemical samples at some EPA locations so that sample spacing is consistent with the RFI approach.

- a. Feature has known chemical and/or radiologic impacts, and/or identified data gaps
- b. Targeted sampling density should be based on feature characteristics and historical use (e.g., holdup tanks, septic tanks, sumps, test areas, etc.).

The logic and rationale for discretionary de-selection of co-located sample locations for Subarea 6 was discussed with the community stakeholders on June 29, 2011. The criterion for each agreed-upon de-selected co-located sampling location is also noted in Table 1.

## **Reduction of Analytes for Chemical Sampling**

During the March 9, 2011 Technical Work Group meeting, DOE discussed with the stakeholders a proposal to modify the secondary analytical suite (i.e., those analyses performed on soil samples collected from areas with a process history of specific chemical usage, elevated field instrument readings, visually contaminated materials, or at locations of waste or fill) at locations where there is sufficient chemical analytical information known to warrant such a reduction. Inputs to reduction of the secondary analytical suite include:

- recent HSA sampling results indicate that many chemicals on the secondary analyte list have been rarely detected
- previous RFI sampling results, and

- DTSC comments and public input on RFI and EPA documents

Rationale for reduction of the secondary analyte list was developed taking into consideration historic operations at the site, proximity of the operation to the sample location, EPA rationale and targeted feature(s), and likelihood of multiple sources or pathways that may have contributed to contamination in the area.

- At a minimum, all chemical co-located samples collected within Subarea 6 will be analyzed for the primary suite. Locations where secondary analyses will be reduced are :
- Samples collected from Locations 40, 31, 33, 38, and 65 in the vicinity of the former Sodium Reactor Experiment (SRE) septic system will be analyzed for alcohols, glycols, nitrates, and TPH (total petroleum hydrocarbons) only. Location 65 will also be analyzed for terphenyls. Location 40 will also be analyzed for perchlorate using Method 6850.
- Samples collected from Location 302 in the vicinity of the former hot oil sodium cleaning facility will be analyzed for alcohols, glycols, and TPH only.
- Samples collected from Locations 276, 280, and 281 in the vicinity of the SRE tarped area (covering mercury-containing soils), and Location 300 in the northeastern portion of the SRE area will be analyzed for alcohols, glycols, terphenyls, TPH, formaldehyde, NDMA.
- Numerous locations within the SRE complex (see Table 1) will be analyzed for alcohols, glycols, terphenyls, and TPH.

These reductions in the secondary suite of analyses are also noted in Table 1 for each sample location. All secondary analytes will be included if field conditions are indicative of potential impacts (e.g., odor, staining, or elevated measurement of volatile organic vapors).

## Schedule

EPA is scheduled to initiate soil sampling within Subarea 6 the week of July 11, 2011 with the collection of surface soil samples identified in Table 1. Collection of subsurface samples is schedule to begin in mid-July 2011 following completion of soil boring sampling within Subarea 5D North.

## References

CDM Federal Programs Corporation (CDM). 2011. *Master Work Plan/Field Sampling and Analysis Plan Co-Located Chemical Sampling at Area IV, Santa Susana Field Laboratory, Ventura County, California*. February 16.

HydroGeoLogic, Inc. 2011. *Subarea 6 FSP Addendum, Santa Susana Field Laboratory Site, Area IV Radiological Study, Santa Susana Field Laboratory*. June 29.

## FIGURES



**Figure 1**  
**Subarea 6 Base Map**  
**Santa Susana Field Laboratory**

**U.S. EPA Region 9**



### Legend

Buildings:

 Demolished

Existing

**1 - 5** Subarea 6 Groups



Y:\Santa\_Susana\EP9038\Soil\_Sampling\SubArea6\  
(1)Subarea6\_BaseMap\_11x17\_mxd  
6/27/2011 sdrallos-kopeccky  
Source:HGL 2010, CIRGIS 2007





**Figure 2**  
**Subarea 6 Group 1 Sample Locations**  
**Santa Susana Field Laboratory**

U.S. EPA Region 9



**Legend**

Buildings:

Demolished

Existing

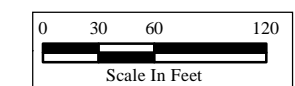
1 - 5 Subarea 6 Groups

Drainage Sample

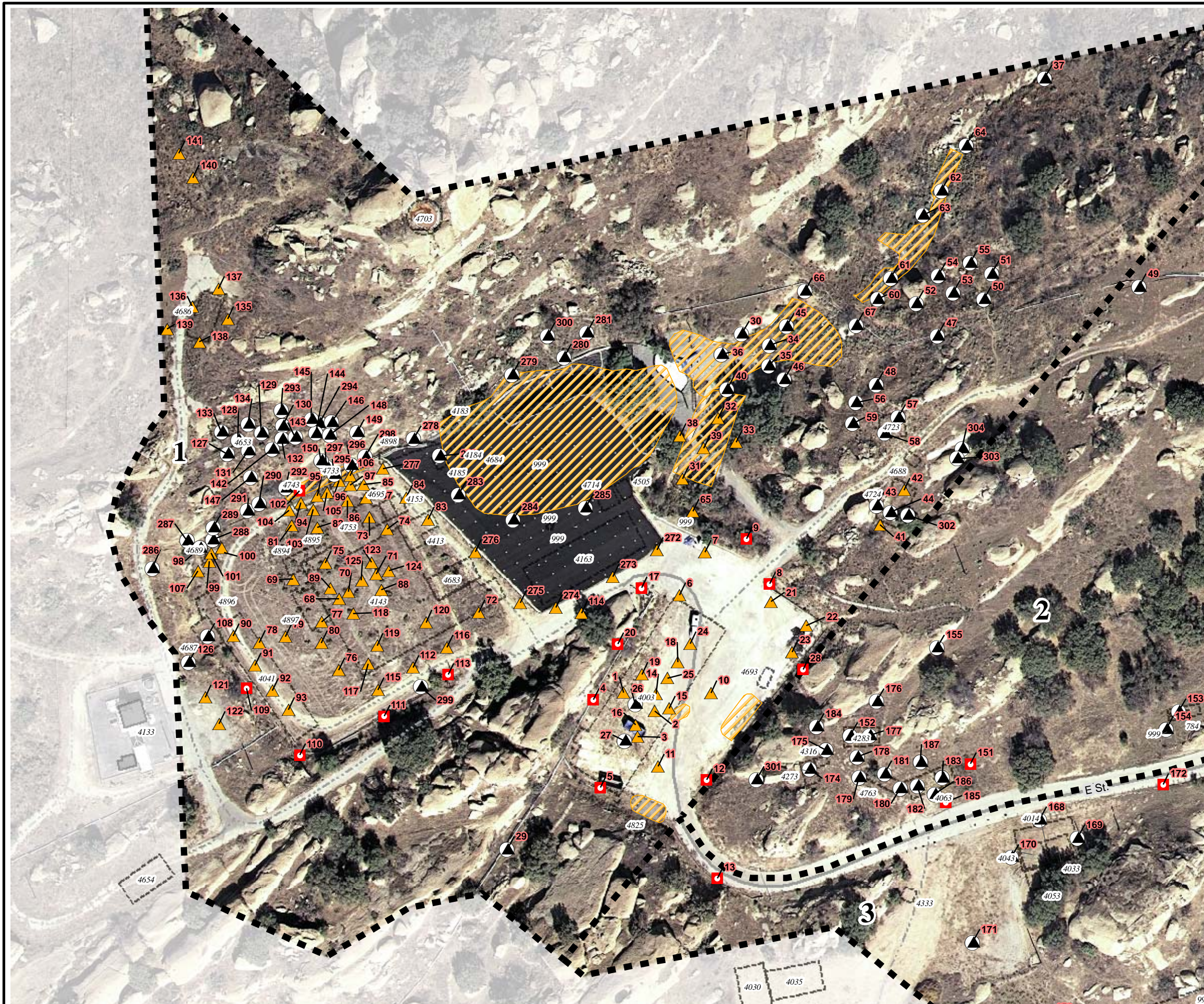
Subsurface Sample

Surface and Subsurface Sample

Likely Chemical  
Remediation Zones



Y:\Santa\_Susana\EP9038\Soil\_Sampling\SubArea6\  
(2)Group1ProposedSampleLocations\_11x17\_6remediation.mxd  
7/7/2011 sdrillos-kopecky  
Source:HGL 2010, CIRGIS 2007





**Figure 3**  
**Subarea 6 Group 2 Sample Locations**  
**Santa Susana Field Laboratory**

U.S. EPA Region 9



**Legend**

Buildings:

Demolished

Existing

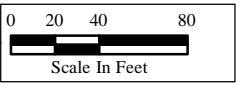
Subarea 6 Groups

Drainage Sample

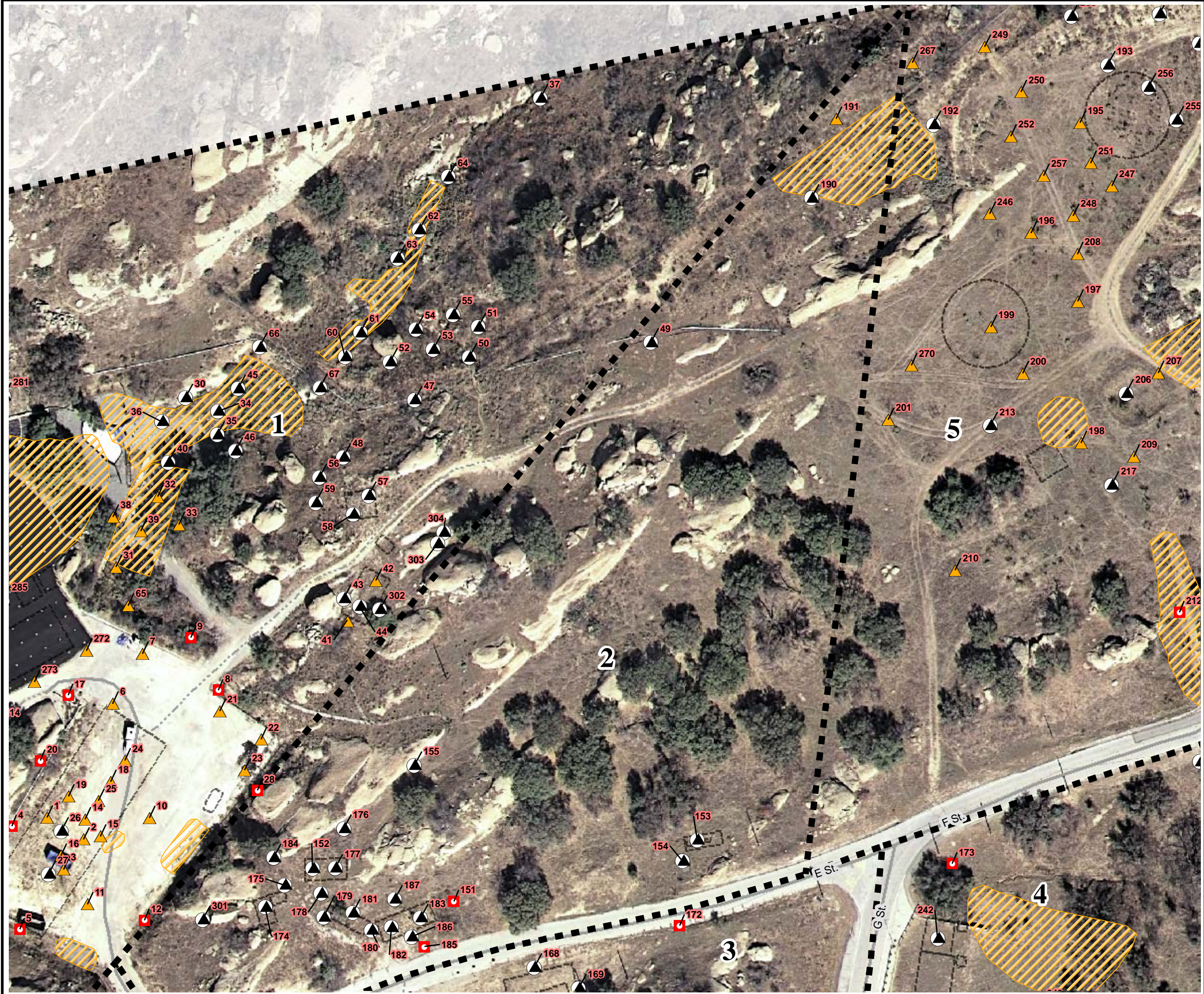
Subsurface Sample

Surface and Subsurface Sample

Likely Chemical  
Remediation Zones



Y:\Santa\_Susana\EP9038\Soil\_Sampling\SubArea6\  
(3)Group2ProposedSampleLocations\_11x17\_6remediation.mxd  
7/7/2011 sdrallos-kopecky  
Source:HGL 2010, CIRGIS 2007





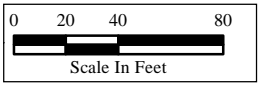
**Figure 4**  
**Subarea 6 Group 3 Sample Locations**  
**Santa Susana Field Laboratory**

U.S. EPA Region 9

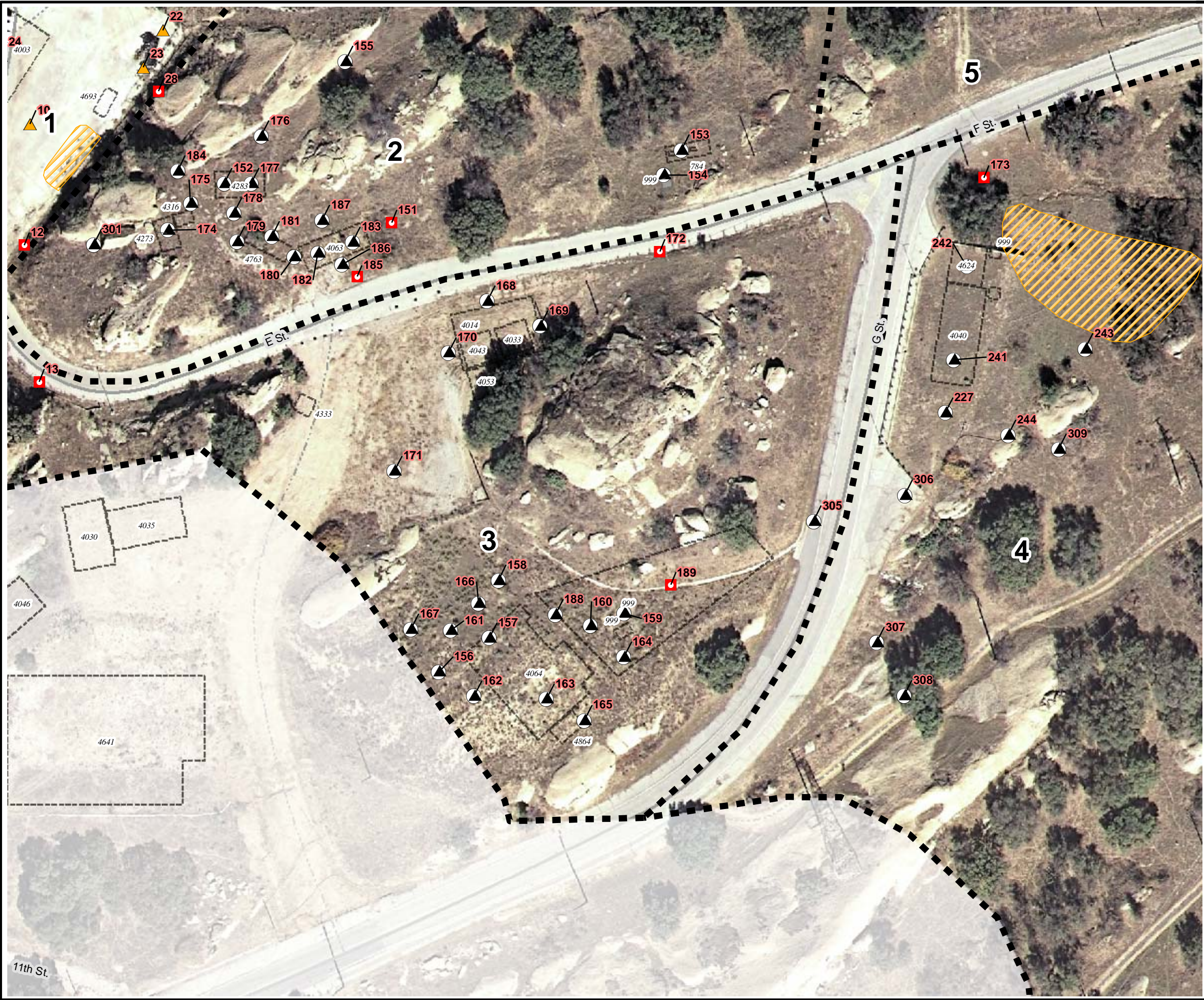


**Legend**

- Buildings:
- Demolished
  - Existing
- Subarea 6 Groups
- Drainage Sample
- Subsurface Sample
- Surface and Subsurface Sample
- Likely Chemical Remediation Zones



Y:\Santa\_Susana\EP9038\Soil\_Sampling\SubArea6\  
(4)Group3ProposedSampleLocations\_11x17\_6remediation.mxd  
7/7/2011 sdrillos-kopecky  
Source:HGL 2010, CIRGIS 2007



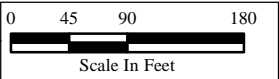


**Figure 5**  
**Subarea 6 Group 4 Sample Locations**  
**Santa Susana Field Laboratory**



**Legend**

- Buildings:
- Demolished
  - Existing
- Subarea 6 Groups
- Drainage Sample
- Subsurface Sample
- Surface and Subsurface Sample
- Likely Chemical Remediation Zones



Y:\Santa\_Susana\EP9038\Soil\_Sampling\SubArea6\  
(5)Group4ProposedSampleLocations\_11x17\_6remediation.mxd  
7/7/2011 sdrillos-kopeccky  
Source:HGL 2010, CIRGIS 2007



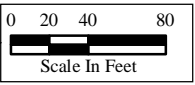
**Figure 6**  
**Subarea 6 Group 5 Sample Locations**  
**Santa Susana Field Laboratory**

U.S. EPA Region 9



**Legend**

- Buildings:
- Demolished
  - Existing
- 1 - 5 Subarea 6 Groups
- Drainage Sample
  - Subsurface Sample
  - Surface and Subsurface Sample
- Likely Chemical Remediation Zones



Y:\Santa\_Susana\EP9038\Soil\_Sampling\SubArea6\  
(6)Group5ProposedSampleLocations\_11x17\_6remediation.mxd  
7/7/2011 sdrillos-kopecky  
Source:HGL 2010, CIRGIS 2007





## TABLE



Table 1  
Summary of Soil Sample Locations in Subarea 6

Group	Sample Type	Location ID	Location Description	Technical Justification	Co-located Chemical Analytes	Co-located Chemical Sample Rationale
Group 1	Subsurface	1	Engineering Test Building - Southwest corner of the footprint for former Building 4003.	Pit shown in Figure 2.1.1b of the Historical Site Assessment.	Primary	
Group 1	Subsurface	2	Engineering Test Building - South corner of the footprint for former Building 4003.	Location of Pit within former Building 4003 (Figure 2.1.1b of the Historical Site Assessment).	Primary	
Group 1	Subsurface	3	Engineering Test Building - South corner of the footprint for former Building 4003.	Location of the Hot Cell within former Building 4003 (Figure 2.1.1b of the Historical Site Assessment).	Primary	
Group 1	Drainage	4	Engineering Test Building - Northwest of former Building 4003.	Asphalt Ditch that may have collected surface water run-off from the vicinity of former building 4003.	Primary	
Group 1	Subsurface	4	Engineering Test Building - Northwest of former Building 4003.	Asphalt Ditch that may have collected surface water run-off from the vicinity of former building 4003.	Primary	
Group 1	Drainage	5	Engineering Test Building - Southwest of former Building 4003.	Asphalt Ditch that may have collected surface water run-off from the vicinity of former building 4003.	Primary	
Group 1	Subsurface	5	Engineering Test Building - Southwest of former Building 4003.	Asphalt Ditch that may have collected surface water run-off from the vicinity of former building 4003.	Primary	
Group 1	Subsurface	6	Engineering Test Building - North of the footprint for former Building 4003.	Potential radiological contamination associated with releases from Sanitary Sewer line from 4003 towards the septic tank and leach field.	Primary	
Group 1	Subsurface	7	Engineering Test Building - North of the footprint for former Building 4003.	Potential radiological contamination associated with releases from Sanitary Sewer line from 4003 towards the septic tank and leach field.	Primary	
Group 1	Drainage	8	Engineering Test Building - AC lined ditch located northeast of the footprint for former Building 4003.	Potential contamination from surface run-off from the vicinity of former building 4003.	Deselect	Existing chemical data in the area; need future additional PCB/metals data in area.
Group 1	Subsurface	8	Engineering Test Building - AC lined ditch located northeast of the footprint for former Building 4003.	Potential contamination from surface run-off from the vicinity of former building 4003.	Deselect	Existing chemical data in the area; need future additional PCB/metals data in area.
Group 1	Drainage	9	Engineering Test Building - North of the footprint for former Building 4003.	Potential contamination from surface run-off from the vicinity of former building 4003 and cleaning.	Primary	
Group 1	Subsurface	9	Engineering Test Building - North of the footprint for former Building 4003.	Potential contamination from surface run-off from the vicinity of former building 4003 and cleaning.	Primary	
Group 1	Subsurface	10	Engineering Test Building - East of the footprint for former Building 4003.	Geophysical Anomaly Feature - Ground Penetrating Radar. Possible Open Storage.	Primary	
Group 1	Subsurface	11	Engineering Test Building - Southeast of the footprint for former Building 4003.	Geophysical Anomaly Feature - Ground Penetrating Radar. Possible Open Storage.	Primary	
Group 1	Drainage	12	Engineering Test Building - AC Lined ditch southeast of the footprint of former building 4003.	Potential contamination from surface water run-off from the vicinity of former Building 4003.	Primary	
Group 1	Subsurface	12	Engineering Test Building - AC Lined ditch southeast of the footprint of former building 4003.	Potential contamination from surface water run-off from the vicinity of former Building 4003.	Primary	
Group 3	Drainage	13	Engineering Test Building - AC lined ditch south of the footprint for former Building 4003.	Surface water run-off from E Street and the former Sodium Storage Building.	Primary	
Group 3	Subsurface	13	Engineering Test Building - AC lined ditch south of the footprint for former Building 4003.	Surface water run-off from E Street and the former Sodium Storage Building.	Primary	
Group 1	Subsurface	14	Engineering Test Building - Central portion of the footprint for former Building 4003.	Geophysical Anomaly Feature - Conductivity. Process Knowledge - Floor Trenches.	Primary	
Group 1	Subsurface	15	Engineering Test Building - Southeast portion of the footprint for former Building 4003.	Geophysical Anomaly Feature - Conductivity. Process Knowledge - Floor Trenches.	Deselect	High density of rad sampling in area.
Group 1	Subsurface	16	Engineering Test Building - South central portion of the footprint for former Building 4003.	Geophysical Anomaly Feature - Conductivity. Process Knowledge - Floor Trenches.	Deselect	High density of rad sampling in area.
Group 1	Drainage	17	Engineering Test Building - North of footprint for former Building 4003 and south east of the Tarp area.	Potential contamination from the south side of the SRE and the north side of the Engineering Test Building (4003).	Primary, alcohols, glycols, terphenyls, TPH	Alcohols, glycols, terphenyls and TPH added due to operational use in area.
Group 1	Subsurface	17	Engineering Test Building - North of footprint for former Building 4003 and south east of the Tarp area.	Potential contamination from the south side of the SRE and the north side of the Engineering Test Building (4003).	Primary, alcohols, glycols, terphenyls, TPH	Alcohols, glycols, terphenyls and TPH added due to operational use in area.
Group 1	Subsurface	18	Engineering Test Building - Northern portion of the footprint of former Building 4003.	Process Knowledge - Floor Trenches.	Deselect	High density of rad sampling in area.
Group 1	Subsurface	19	Engineering Test Building - West side of the footprint of former Building 4003.	Geophysical Anomaly Feature - Conductivity. Process Knowledge - Floor Trenches.	Primary	
Group 1	Drainage	20	Engineering Test Building - Drainage west side of former Building 4003.	Potential radiological contamination from surface water run-off from the vicinity around former Building 4003.	Primary	
Group 1	Subsurface	20	Engineering Test Building - Drainage west side of former Building 4003.	Potential radiological contamination from surface water run-off from the vicinity around former Building 4003.	Primary	
Group 1	Subsurface	21	Engineering Test Building - Northeast of former Building 4003.	Aerial Photo Feature - Open Storage.	Deselect	Existing chemical data in the area; need future additional PCB/metals data in area.
Group 1	Subsurface	22	Engineering Test Building - Northeast of former Building 4003.	Aerial Photo Feature - Open Storage.	Primary	
Group 1	Subsurface	23	Engineering Test Building - Northeast of former Building 4003.	Aerial Photo Feature - Open Storage.	Primary	
Group 1	Subsurface	24	Engineering Test Building - Northern portion of the footprint of former Building 4003.	Process Knowledge - Floor Trenches.	Primary	
Group 1	Subsurface	25	Engineering Test Building - Central portion of the footprint of former Building 4003.	Process Knowledge - Floor Trenches.	Primary	

Table 1  
Summary of Soil Sample Locations in Subarea 6

Group	Sample Type	Location ID	Location Description	Technical Justification	Co-located Chemical Analytes	Co-located Chemical Sample Rationale
Group 1	Subsurface	26	Engineering Test Building - South central corner of the footprint for former Building 4003.	Geophysical Anomaly Feature - Conductivity. Process Knowledge - Floor Trenches. Slightly elevated gamma scanning survey readings.	Deselect	High density of rad sampling in area.
Group 1	Surface	26	Engineering Test Building - South central corner of the footprint for former Building 4003.	Geophysical Anomaly Feature - Conductivity. Process Knowledge - Floor Trenches. Slightly elevated gamma scanning survey readings.	Deselect	High density of rad sampling in area.
Group 1	Subsurface	27	Engineering Test Building - South central corner of the footprint for former Building 4003.	Geophysical Anomaly Feature - Conductivity. Process Knowledge - Floor Trenches. Slightly elevated gamma scanning survey readings.	Deselect	High density of rad sampling in area; need future additional data in deep soil to characterize the mock up pit.
Group 1	Drainage	28	Engineering Test Building - In ditch on the southeast side of former Building 4003.	Surface water run-off from Engineering Building. Aerial Photo Feature - Open Storage.	Primary	
Group 1	Subsurface	28	Engineering Test Building - In ditch on the southeast side of former Building 4003.	Surface water run-off from Engineering Building. Aerial Photo Feature - Open Storage.	Primary	
Group 1	Subsurface	29	Water line leading from former Building 4003 to the KEWB.	Potential radiological contamination along above ground pipeline. Stake Holder Request.	Primary	
Group 1	Surface	29	Water line leading from former Building 4003 to the KEWB.	Potential radiological contamination along above ground pipeline. Stake Holder Request.	Primary	
Group 1	Subsurface	30	SRE Pond Area.	North side of pond area. Boundary of Chemical Likely Remediation Zone.	Primary and Secondary	Secondary suite added since sample location bounds waste disposal area.
Group 1	Surface	30	SRE Pond Area.	North side of pond area. Boundary of Chemical Likely Remediation Zone.	Primary and Secondary	Secondary suite added since sample location bounds waste disposal area.
Group 1	Subsurface	31	SRE Septic System Area.	Potential radiological contamination related to the former septic tank.	Primary, alcohols, glycols, nitrates, TPH	Sample location in leach field waste disposal area; secondary analyses added to supplement existing chemical data.
Group 1	Subsurface	32	SRE Septic System Area.	Location of septic tank leach field. Inside Chemical Likely Remediation Zone.	Deselect	Sample location within identified chemical contamination area.
Group 1	Subsurface	33	SRE Septic System Area - Southeast of leach field.	Potential radiological contamination from the leach field. Boundary of the Chemical Likely Remediation Zone.	Primary, alcohols, glycols, nitrates, TPH	Sample location in leach field waste disposal area; secondary analyses added to supplement existing chemical data.
Group 1	Subsurface	34	SRE Pond Area.	Potential radiological contamination from surface water run-off from the vicinity of the SRE, former Building 4003, and the leach field.	Deselect	Sample location within identified chemical contamination area.
Group 1	Surface	34	SRE Pond Area.	Potential radiological contamination from surface water run-off from the vicinity of the SRE, former Building 4003, and the leach field.	Deselect	Sample location within identified chemical contamination area.
Group 1	Subsurface	35	SRE Pond Area.	Potential radiological contamination from surface water run-off from the vicinity of the SRE, former Building 4003, and the leach field.	Primary and Secondary	Secondary suite added since sample location bounds waste disposal area.
Group 1	Surface	35	SRE Pond Area.	Potential radiological contamination from surface water run-off from the vicinity of the SRE, former Building 4003, and the leach field.	Primary and Secondary	Secondary suite added since sample location bounds waste disposal area.
Group 1	Subsurface	36	SRE Pond Area.	Potential radiological contamination from surface water run-off from the vicinity of the SRE, former Building 4003, and the leach field.	Deselect	Sample location within identified chemical contamination area.
Group 1	Surface	36	SRE Pond Area.	Potential radiological contamination from surface water run-off from the vicinity of the SRE, former Building 4003, and the leach field.	Deselect	Sample location within identified chemical contamination area.
Group 1	Subsurface	37	SRE Pond Area - Drainage leading north.	Potential radiological contamination associated with surface water from the SRE Pond.	Primary and Secondary	Secondary suite added since sample location bounds waste disposal area.
Group 1	Surface	37	SRE Pond Area - Drainage leading north.	Potential radiological contamination associated with surface water from the SRE Pond.	Primary and Secondary	Secondary suite added since sample location bounds waste disposal area.
Group 1	Subsurface	38	SRE Septic System Area.	Location of septic tank leach field. Boundary of Chemical Likely Remediation Zone.	Primary, alcohols, glycols, nitrates, TPH	Sample location in leach field waste disposal area; secondary analyses added to supplement existing chemical data.
Group 1	Subsurface	39	SRE Septic System Area.	Location of septic tank leach field. Inside Chemical Likely Remediation Zone.	Deselect	Sample location within identified chemical contamination area.
Group 1	Subsurface	40	SRE Septic System Area.	Location of septic tank leach field. Boundary of Chemical Likely Remediation Zone.	Primary (including perchlorate by Method 6850), alcohols, glycols, nitrates, TPH	Sample location in leach field waste disposal area; secondary analyses added to supplement existing chemical data. Perchlorate by Method 6850 added to address reporting limit issues in existing chemical data.
Group 1	Surface	40	SRE Septic System Area.	Location of septic tank leach field. Boundary of Chemical Likely Remediation Zone.	Primary (including perchlorate by Method 6850), alcohols, glycols, nitrates, TPH	Sample location in leach field waste disposal area; secondary analyses added to supplement existing chemical data. Perchlorate by Method 6850 added to address reporting limit issues in existing chemical data.
Group 1	Subsurface	41	Hot Oil Sodium Cleaning Facility.	Potential radiological contamination resulting from cleaning activities.	Primary, alcohols, glycols, terphenyls, TPH	Alcohols, glycols, terphenyls, and TPH added due to operational use.
Group 1	Subsurface	42	Hot Oil Sodium Cleaning Facility.	Potential radiological contamination resulting from cleaning activities.	Primary, alcohols, glycols, terphenyls, TPH	Alcohols, glycols, terphenyls, and TPH added due to operational use.
Group 1	Subsurface	43	Hot Oil Sodium Cleaning Facility.	Potential radiological contamination resulting from cleaning activities.	Primary, alcohols, glycols, terphenyls, TPH	Alcohols, glycols, terphenyls, and TPH added due to operational use.
Group 1	Surface	43	Hot Oil Sodium Cleaning Facility.	Potential radiological contamination resulting from cleaning activities.	Primary, alcohols, glycols, terphenyls, TPH	Alcohols, glycols, terphenyls, and TPH added due to operational use.
Group 1	Subsurface	44	Hot Oil Sodium Cleaning Facility.	Potential radiological contamination resulting from cleaning activities.	Primary, alcohols, glycols, terphenyls, TPH	Alcohols, glycols, terphenyls, and TPH added due to operational use.
Group 1	Surface	44	Hot Oil Sodium Cleaning Facility.	Potential radiological contamination resulting from cleaning activities.	Primary, alcohols, glycols, terphenyls, TPH	Alcohols, glycols, terphenyls, and TPH added due to operational use.
Group 1	Subsurface	45	SRE Pond Area - Lowest portion of the area.	Potential radiological contamination from surface water run-off from the vicinity of the SRE Complex, former Building 4003, and leach field.	Deselect	Sample location within identified chemical contamination area.
Group 1	Surface	45	SRE Pond Area - Lowest portion of the area.	Potential radiological contamination from surface water run-off from the vicinity of the SRE Complex, former Building 4003, and leach field.	Deselect	Sample location within identified chemical contamination area.
Group 1	Subsurface	46	Transfer Pipeline - SRE Pond Area near transfer pump.	Potential radiological contamination from leaks at the pump and along the above ground pipeline.	Primary and Secondary	Secondary suite added since sample location bounds waste disposal area.
Group 1	Surface	46	Transfer Pipeline - SRE Pond Area near transfer pump.	Potential radiological contamination from leaks at the pump and along the above ground pipeline.	Primary and Secondary	Secondary suite added since sample location bounds waste disposal area.
Group 1	Subsurface	47	Transfer Pipeline - East of the SRE Pond dam.	Potential radiological contamination from leaks along the above ground pipeline.	Primary and Secondary	Secondary added since sample location targets pipeline from waste discharge area (SRE Pond).
Group 1	Surface	47	Transfer Pipeline - East of the SRE Pond dam.	Potential radiological contamination from leaks along the above ground pipeline.	Primary and Secondary	Secondary added since sample location targets pipeline from waste discharge area (SRE Pond).
Group 1	Subsurface	48	Transfer Pipeline - East of the SRE Pond dam.	Potential radiological contamination from leaks along the above ground pipeline.	Primary, alcohols, glycols, terphenyls, TPH	Alcohols, glycols, terphenyls, and TPH added due to operational use.
Group 1	Surface	48	Transfer Pipeline - East of the SRE Pond dam.	Potential radiological contamination from leaks along the above ground pipeline.	Primary, alcohols, glycols, terphenyls, TPH	Alcohols, glycols, terphenyls, and TPH added due to operational use.
Group 2	Subsurface	49	Steam Sodium Cleaning Pad - Down gradient of pad.	Potential radiological contamination from cleaning activities.	Primary and Secondary	Secondary suite added since location targets pipeline.
Group 2	Surface	49	Steam Sodium Cleaning Pad - Down gradient of pad.	Potential radiological contamination from cleaning activities.	Primary and Secondary	Secondary suite added since location targets pipeline.

Table 1  
Summary of Soil Sample Locations in Subarea 6

Group	Sample Type	Location ID	Location Description	Technical Justification	Co-located Chemical Analytes	Co-located Chemical Sample Rationale
Group 1	Subsurface	50	Debris Pile - East of SRE Pond Dam.	Potential radiological contamination from dumping activities.	Primary, alcohols, glycols, terphenyls, TPH	Sample location in excavation backfill. Only analyze deep sample located at bedrock interface if bedrock encountered. If bedrock is not encountered, <b>DO NOT COLLECT SAMPLE</b> . Alcohols, glycols, terphenyls, and TPH added due to operational use.
Group 1	Surface	50	Debris Pile - East of SRE Pond Dam.	Potential radiological contamination from dumping activities.	Primary, alcohols, glycols, terphenyls, TPH	Alcohols, glycols, terphenyls, and TPH added due to operational use.
Group 1	Subsurface	51	Debris Pile - East of SRE Pond Dam.	Potential radiological contamination from dumping activities.	Primary, alcohols, glycols, terphenyls, TPH	Alcohols, glycols, terphenyls, and TPH added due to operational use.
Group 1	Surface	51	Debris Pile - East of SRE Pond Dam.	Potential radiological contamination from dumping activities.	Primary, alcohols, glycols, terphenyls, TPH	Alcohols, glycols, terphenyls and TPH added due to operational use in area; future additional surface data for PCBs needed.
Group 1	Subsurface	52	Debris Pile - East of SRE Pond Dam.	Potential radiological contamination from dumping activities.	Primary and Secondary	Additional secondary analyses in representative locations within debris/disturbed soil area.
Group 1	Surface	52	Debris Pile - East of SRE Pond Dam.	Potential radiological contamination from dumping activities.	Primary and Secondary	Additional secondary analyses in representative locations within debris/disturbed soil area.
Group 1	Subsurface	53	Debris Pile - East of SRE Pond Dam.	Potential radiological contamination from dumping activities.	Primary, alcohols, glycols, terphenyls, TPH	Alcohols, glycols, terphenyls and TPH added due to operational use in area; future additional surface data for PCBs needed.
Group 1	Surface	53	Debris Pile - East of SRE Pond Dam.	Potential radiological contamination from dumping activities.	Primary, alcohols, glycols, terphenyls, TPH	Alcohols, glycols, terphenyls and TPH added due to operational use in area.
Group 1	Subsurface	54	Debris Pile - East of SRE Pond Dam.	Potential radiological contamination from dumping activities.	Primary, alcohols, glycols, terphenyls, TPH	Alcohols, glycols, terphenyls and TPH added due to operational use in area.
Group 1	Surface	54	Debris Pile - East of SRE Pond Dam.	Potential radiological contamination from dumping activities.	Primary, alcohols, glycols, terphenyls, TPH	Alcohols, glycols, terphenyls and TPH added due to operational use in area.
Group 1	Subsurface	55	Debris Pile - East of SRE Pond Dam	Potential radiological contamination from dumping activities.	Primary and Secondary	Additional secondary analyses in representative locations within debris/disturbed soil area.
Group 1	Surface	55	Debris Pile - East of SRE Pond Dam	Potential radiological contamination from dumping activities.	Primary and Secondary	Additional secondary analyses in representative locations within debris/disturbed soil area.
Group 1	Subsurface	56	Steam Sodium Cleaning Pad - Downgradient of pad.	Potential radiological contamination from cleaning activities.	Primary, alcohols, glycols, terphenyls, TPH	Sample location in waste disposal area; refined secondary suite due to existing chemical data. Alcohols, glycols, terphenyls, and TPH added due to operational use.
Group 1	Surface	56	Steam Sodium Cleaning Pad - Downgradient of pad.	Potential radiological contamination from cleaning activities.	Primary, alcohols, glycols, terphenyls, TPH	Sample location in waste disposal area; refined secondary suite due to existing chemical data. Alcohols, glycols, terphenyls, and TPH added due to operational use.
<del>Group 1</del>	<del>Subsurface</del>	<del>57</del>	<del>Steam Sodium Cleaning Pad.</del>	<del>Potential radiological contamination from cleaning activities.</del>	<del>Deselect</del>	<del>High density of rad sampling in area.</del>
<del>Group 1</del>	<del>Surface</del>	<del>57</del>	<del>Steam Sodium Cleaning Pad.</del>	<del>Potential radiological contamination from cleaning activities.</del>	<del>Deselect</del>	<del>High density of rad sampling in area.</del>
Group 1	Subsurface	58	Steam Sodium Cleaning Pad.	Potential radiological contamination from cleaning activities.	Primary, alcohols, glycols, terphenyls, TPH	Alcohols, glycols, terphenyls, and TPH added due to operational use.
Group 1	Surface	58	Steam Sodium Cleaning Pad.	Potential radiological contamination from cleaning activities.	Primary, alcohols, glycols, terphenyls, TPH	Alcohols, glycols, terphenyls, and TPH added due to operational use.
Group 1	Subsurface	59	Steam Sodium Cleaning Pad - Downgradient of pad.	Potential radiological contamination from cleaning activities.	Primary, alcohols, glycols, terphenyls, TPH	Sample location in waste disposal area; refined secondary suite due to existing chemical data. Alcohols, glycols, terphenyls, and TPH added due to operational use.
Group 1	Surface	59	Steam Sodium Cleaning Pad - Downgradient of pad.	Potential radiological contamination from cleaning activities.	Primary, alcohols, glycols, terphenyls, TPH	Sample location in waste disposal area; refined secondary suite due to existing chemical data. Alcohols, glycols, terphenyls, and TPH added due to operational use.
Group 1	Subsurface	60	SRE Pond - Drainage leading to the north.	Potential radiological contamination associated with water from the SRE Pond. Boundary of Chemical Likely Remediation Zone.	Primary and Secondary	Secondary suite added since sample location bounds an identified chemical contamination area.
Group 1	Surface	60	SRE Pond - Drainage leading to the north.	Potential radiological contamination associated with water from the SRE Pond. Boundary of Chemical Likely Remediation Zone.	Primary and Secondary	Secondary suite added since sample location bounds an identified chemical contamination area.
<del>Group 1</del>	<del>Subsurface</del>	<del>61</del>	<del>SRE Pond - Drainage leading to the north.</del>	<del>Potential radiological contamination associated with water from the SRE Pond. Within Chemical Likely Remediation Zone.</del>	<del>Deselect</del>	<del>Sample location in identified chemical contamination area.</del>
<del>Group 1</del>	<del>Surface</del>	<del>61</del>	<del>SRE Pond - Drainage leading to the north.</del>	<del>Potential radiological contamination associated with water from the SRE Pond. Within Chemical Likely Remediation Zone.</del>	<del>Deselect</del>	<del>Sample location in identified chemical contamination area.</del>
<del>Group 1</del>	<del>Subsurface</del>	<del>62</del>	<del>SRE Pond - Drainage leading to the north.</del>	<del>Potential radiological contamination associated with water from the SRE Pond. Within Chemical Likely Remediation Zone.</del>	<del>Deselect</del>	<del>Secondary suite added since sample location bounds an identified chemical contamination area.</del>
<del>Group 1</del>	<del>Surface</del>	<del>62</del>	<del>SRE Pond - Drainage leading to the north.</del>	<del>Potential radiological contamination associated with water from the SRE Pond. Within Chemical Likely Remediation Zone.</del>	<del>Deselect</del>	<del>Sample location in identified chemical contamination area.</del>
Group 1	Subsurface	63	SRE Pond - Drainage leading to the north.	Potential radiological contamination associated with water from the SRE Pond. Boundary of Chemical Likely Remediation Zone.	Primary and Secondary	Secondary suite added since sample location bounds an identified chemical contamination area.
Group 1	Surface	63	SRE Pond - Drainage leading to the north.	Potential radiological contamination associated with water from the SRE Pond. Boundary of Chemical Likely Remediation Zone.	Primary and Secondary	Secondary suite added since sample location bounds an identified chemical contamination area.
Group 1	Subsurface	64	SRE Pond - Drainage leading to the north.	Potential radiological contamination associated with water from the SRE Pond.	Primary and Secondary	Secondary suite added since sample location bounds an identified chemical contamination area.
Group 1	Surface	64	SRE Pond - Drainage leading to the north.	Potential radiological contamination associated with water from the SRE Pond.	Primary and Secondary	Secondary suite added since sample location bounds an identified chemical contamination area.
Group 1	Subsurface	65	SRE Septic System Area.	Potential radiological contamination associated with Sewer Transfer Station.	Primary, alcohols, glycols, nitrates, terphenyls, TPH	Sample location in sewer waste disposal area; secondary suite analyses added to supplement existing chemical data.
Group 1	Subsurface	66	SRE Pond Area - Northern portion of the dam.	Potential radiological contamination from surface water run-off from the SRE Complex and former Building 4003.	Primary and Secondary	Secondary suite added since sample location in dam bounds waste disposal area; need additional chemical data in area.
Group 1	Surface	66	SRE Pond Area - Northern portion of the dam.	Potential radiological contamination from surface water run-off from the SRE Complex and former Building 4003.	Primary and Secondary	Secondary suite added since sample location in dam bounds waste disposal area; need additional chemical data in area.
Group 1	Subsurface	67	SRE Pond Area - Southern portion of the dam.	Potential radiological contamination from surface water run-off from the SRE Complex and former Building 4003.	Primary and Secondary	Secondary suite added since sample location in dam bounds waste disposal area; need additional chemical data in area.
Group 1	Surface	67	SRE Pond Area - Southern portion of the dam.	Potential radiological contamination from surface water run-off from the SRE Complex and former Building 4003.	Primary and Secondary	Secondary suite added since sample location in dam bounds waste disposal area; need additional chemical data in area.
Group 1	Subsurface	68	SRE Complex - Central Portion	Location of the former Hot Cell as shown in the Floor Plan presented as Figure 2.1.3b of the Subarea 6 Historical Site Assessment.	Primary, alcohols, glycols, terphenyls, TPH	Alcohols, glycols, terphenyls, and TPH added due to operational use.
Group 1	Subsurface	69	SRE Complex - Central Portion	Geophysical Anomaly Feature - Ground Penetrating Radar and Conductivity.	Primary, alcohols, glycols, terphenyls, TPH	Alcohols, glycols, terphenyls, and TPH added due to operational use.
Group 1	Subsurface	70	SRE Complex - Central Portion	Location of the former Dry Fuel Storage Cell as shown in the Floor Plan presented as Figure 2.1.3b of the Subarea 6 Historical Site Assessment.	Primary, alcohols, glycols, terphenyls, TPH	Alcohols, glycols, terphenyls, and TPH added due to operational use.
Group 1	Subsurface	71	SRE Complex - Central Portion	Location of the former Reactor Vault as shown in the Floor Plan presented as Figure 2.1.3b of the Subarea 6 Historical Site Assessment.	Primary, alcohols, glycols, terphenyls, TPH	Alcohols, glycols, terphenyls, and TPH added due to operational use.
Group 1	Subsurface	72	SRE Complex - Southeast Portion	Geophysical Anomaly Feature - Ground Penetrating Radar.	Primary, alcohols, glycols, terphenyls, TPH	Alcohols, glycols, terphenyls, TPH added due to operational use.



Table 1  
Summary of Soil Sample Locations in Subarea 6

Group	Sample Type	Location ID	Location Description	Technical Justification	Co-located Chemical Analytes	Co-located Chemical Sample Rationale
Group 1	Subsurface	73	SRE Complex - Northeast portion within the footprint of former Building 4753.	Location of the former Primary Sodium Storage Tank Vault. Aerial Photo feature - Excavation. Geophysical Anomaly Feature - Ground Penetrating Radar & Magnetometer.	Primary, alcohols, glycols, terphenyls, TPH	Alcohols, glycols, terphenyls, TPH added due to operational use.
Group 1	Subsurface	74	SRE Complex - Northeast portion	Geophysical Anomaly Feature - Ground Penetrating Radar and Magnetometer.	Primary, alcohols, glycols, terphenyls, TPH	Alcohols, glycols, terphenyls, TPH added due to operational use.
Group 1	Subsurface	75	SRE Complex - North portion	Geophysical Anomaly Feature - Ground Penetrating Radar and Magnetometer.	Primary, alcohols, glycols, terphenyls, TPH	Alcohols, glycols, terphenyls, TPH added due to operational use.
Group 1	Subsurface	76	SRE Complex - Southwest portion	Geophysical Anomaly Feature - Conductivity.	Primary, alcohols, glycols, terphenyls, TPH	Alcohols, glycols, terphenyls, TPH added in yard for potential storage based on Area IV use.
Group 1	Subsurface	77	SRE Complex - West portion	Geophysical Anomaly Feature - Ground Penetrating Radar.	Primary, alcohols, glycols, terphenyls, TPH	Alcohols, glycols, terphenyls, and TPH added due to operational use.
<del>Group 1</del>	<del>Subsurface</del>	<del>78</del>	<del>SRE Complex - West portion, within the footprint of former Building 4041.</del>	<del>Geophysical Anomaly Feature - Ground Penetrating Radar. Within the footprint of former Building 4041.</del>	<del>Deselect</del>	<del>High density of rad sampling in area.</del>
Group 1	Subsurface	79	SRE Complex - West portion, within the footprint of former Building 4041.	Geophysical Anomaly Feature - Ground Penetrating Radar.	Primary, alcohols, glycols, terphenyls, TPH	Alcohols, glycols, terphenyls, and TPH added due to operational use.
Group 1	Subsurface	80	SRE Complex - Southwest portion, within the footprint of former Building 4041.	Geophysical Anomaly Feature - Ground Penetrating Radar.	Primary, alcohols, glycols, terphenyls, TPH	Alcohols, glycols, terphenyls, and TPH added due to potential storage of chemicals related to nearby operations.
Group 1	Subsurface	81	SRE Complex - Northwest portion	Historical Radiological Liquid Spill. Geophysical Anomaly Feature - Ground Penetrating Radar.	Primary, alcohols, glycols, terphenyls, TPH	Alcohols, glycols, terphenyls, TPH added due to operational use.
Group 1	Subsurface	82	SRE Complex - Northwest portion	Historical Radiological Liquid Spill. Geophysical Anomaly Feature - Magnetometer.	Primary, alcohols, glycols, terphenyls, TPH	Alcohols, glycols, terphenyls, TPH added due to operational use.
Group 1	Subsurface	83	SRE Complex - Northeast portion, within the footprint of former Building 4413.	Aerial Photo feature - Excavation. Within the footprint of former Building 4413.	Primary, alcohols, glycols, terphenyls, TPH	Alcohols, glycols, terphenyls, TPH added due to operational use.
Group 1	Subsurface	84	SRE Complex - Northeast portion, within the footprint of former Building 4153.	Aerial Photo feature - Excavation. Within the footprint of former Building 4153.	Primary, alcohols, glycols, terphenyls, TPH	Alcohols, glycols, terphenyls, TPH added due to operational use.
Group 1	Subsurface	85	SRE Complex - Northeast portion. Southeast of the Sodium Cleaning Pad (Site 4733).	Downgradient of the Sodium Cleaning Pad. Possible Open Storage.	Primary, alcohols, glycols, terphenyls, TPH	Alcohols, glycols, terphenyls, TPH added due to operational use.
Group 1	Subsurface	86	SRE Complex - Northeast portion. South of the Sodium Cleaning Pad (Site 4733).	Downgradient of the Sodium Cleaning Pad. Possible Open Storage.	Primary, alcohols, glycols, terphenyls, TPH	Alcohols, glycols, terphenyls, TPH added due to operational use.
<del>Group 1</del>	<del>Subsurface</del>	<del>87</del>	<del>SRE Complex - Northeast portion. South of the Sodium Cleaning Pad (Site 4733).</del>	<del>Downgradient of the Sodium Cleaning Pad. Possible Open Storage. Geophysical Anomaly Feature - Magnetometer.</del>	<del>Deselect</del>	<del>High density of rad sampling in area.</del>
Group 1	Subsurface	88	SRE Complex - Central Portion. South of the former Reactor Vault.	Potential radiological contamination associated with the former Reactor Vault.	Primary, alcohols, glycols, terphenyls, TPH	Sample location in waste disposal area; refined secondary suite due to existing chemical data. Alcohols, glycols, terphenyls, and TPH added due to operational use.
Group 1	Subsurface	89	SRE Complex - Central Portion, Northwest corner of the footprint for former Building 4143.	Location of the former Fuel Wash Cells.	Primary, alcohols, glycols, terphenyls, TPH	Sample location in waste disposal area; refined secondary suite due to existing chemical data. Alcohols, glycols, terphenyls, and TPH added due to operational use.
Group 1	Subsurface	90	SRE Complex - West Portion, within the footprint of former Building 4041.	Potential radiological contamination associated with activities conducted in former Building 4041.	Primary, alcohols, glycols, terphenyls, TPH	Alcohols, glycols, terphenyls, and TPH added due to operational use.
<del>Group 1</del>	<del>Subsurface</del>	<del>91</del>	<del>SRE Complex - West Portion, within the footprint of former Building 4041.</del>	<del>Potential radiological contamination associated with activities conducted in former Building 4041.</del>	<del>Deselect</del>	<del>High density of rad sampling in area.</del>
<del>Group 1</del>	<del>Subsurface</del>	<del>92</del>	<del>SRE Complex - West Portion, within the footprint of former Building 4041.</del>	<del>Potential radiological contamination associated with activities conducted in former Building 4041.</del>	<del>Deselect</del>	<del>High density of rad sampling in area.</del>
Group 1	Subsurface	93	SRE Complex - West Portion, within the footprint of former Building 4041.	Potential radiological contamination associated with activities conducted in former Building 4041.	Primary, alcohols, glycols, terphenyls, TPH	Alcohols, glycols, terphenyls, and TPH added due to operational use.
Group 1	Subsurface	94	SRE Complex - North Central Portion.	Location of the Tetralin Heat Exchanger, former Building 4743.	Primary, alcohols, glycols, terphenyls, TPH	Sample location in waste disposal area; refined secondary suite due to existing chemical data. Alcohols, glycols, terphenyls, and TPH added due to operational use.
<del>Group 1</del>	<del>Subsurface</del>	<del>95</del>	<del>SRE Complex - North Central Portion.</del>	<del>Location of the Tetralin Heat Exchanger, former Building 4743.</del>	<del>Deselect</del>	<del>High density of rad sampling in area.</del>
Group 1	Subsurface	96	SRE Complex - Northeast portion. Within the footprint of the former Sodium Cleaning Pad (Site 4733).	Potential radiological contamination associated with cleaning activities conducted at the former Sodium Cleaning Pad.	Primary, alcohols, glycols, terphenyls, TPH	Alcohols, glycols, terphenyls, TPH added due to operational use.
<del>Group 1</del>	<del>Subsurface</del>	<del>97</del>	<del>SRE Complex - Northeast portion. Within the footprint of the former Sodium Cleaning Pad (Site 4733).</del>	<del>Potential radiological contamination associated with cleaning activities conducted at the former Sodium Cleaning Pad.</del>	<del>Deselect</del>	<del>High density of rad sampling in area.</del>
Group 1	Subsurface	98	SRE Complex - Northwest portion. Site 4689.	Open Storage Area. Close proximity to PGREY numbers 2 and 3.	Primary, alcohols, glycols, terphenyls, TPH	Alcohols, glycols, terphenyls, TPH added due to operational use.
Group 1	Surface	98	SRE Complex - Northwest portion. Site 4689.	Open Storage Area. Close proximity to PGREY numbers 2 and 3.	Primary, alcohols, glycols, terphenyls, TPH	Alcohols, glycols, terphenyls, TPH added due to operational use.
Group 1	Subsurface	99	SRE Complex - Northwest portion. Site 4689.	Downgradient from the Open Storage Area. Close proximity to PGREY numbers 2 and 3.	Primary, alcohols, glycols, terphenyls, TPH	Alcohols, glycols, terphenyls, TPH added due to operational use.
Group 1	Subsurface	100	SRE Complex - Northwest portion. Site 4689.	Downgradient from the Open Storage Area. Close proximity to PGREY numbers 2 and 3.	Primary, alcohols, glycols, terphenyls, TPH	Alcohols, glycols, terphenyls, TPH added due to operational use.
<del>Group 1</del>	<del>Subsurface</del>	<del>101</del>	<del>SRE Complex - Northwest portion. Site 4689.</del>	<del>Within the footprint of the former Open Storage Area 4689. Close proximity to PGREY numbers 2 and 3.</del>	<del>Deselect</del>	<del>High density of rad sampling in area.</del>
<del>Group 1</del>	<del>Drainage</del>	<del>102</del>	<del>SRE Complex - North Central Portion.</del>	<del>Potential radiological contamination from the storage of the Tetralin Heat exchangers.</del>	<del>Deselect</del>	<del>Sample location in identified chemical contamination area.</del>
<del>Group 1</del>	<del>Subsurface</del>	<del>102</del>	<del>SRE Complex - North Central Portion.</del>	<del>Potential radiological contamination from the storage of the Tetralin Heat exchangers.</del>	<del>Deselect</del>	<del>Sample location in identified chemical contamination area.</del>
Group 1	Subsurface	103	SRE Complex - North Central Portion.	Downgradient of the Tetralin Heat Exchanger, former Building 4743.	Primary, alcohols, glycols, terphenyls, TPH	Sample location in waste disposal area; refined secondary suite due to existing chemical data. Alcohols, glycols, terphenyls, and TPH added due to operational use.
Group 1	Subsurface	104	SRE Complex - North Central Portion.	Downgradient of the Tetralin Heat Exchanger, former Building 4743.	Primary, alcohols, glycols, terphenyls, TPH	Alcohols, glycols, terphenyls, TPH added due to operational use.
Group 1	Subsurface	105	SRE Complex - North Central Portion.	Downgradient of the Tetralin Heat Exchanger, former Building 4743.	Primary, alcohols, glycols, terphenyls, TPH	Alcohols, glycols, terphenyls, TPH added due to operational use.
Group 1	Subsurface	106	SRE Complex - Northeast portion. Within the footprint of the former Sodium Cleaning Pad (Site 4733).	Potential radiological contamination associated with cleaning activities conducted at the former Sodium Cleaning Pad.	Primary, alcohols, glycols, terphenyls, TPH	Alcohols, glycols, terphenyls, TPH added due to operational use.
<del>Group 1</del>	<del>Subsurface</del>	<del>107</del>	<del>SRE Complex - Northwest portion. Site 4689.</del>	<del>Downgradient from the Open Storage Area. Close proximity to PGREY numbers 1 and 2.</del>	<del>Deselect</del>	<del>High density of rad sampling in area.</del>
<del>Group 1</del>	<del>Subsurface</del>	<del>108</del>	<del>SRE Complex - West portion. Site 4687.</del>	<del>Potential radiological contamination associated with loading and unloading of radioactive waste in the vicinity of 4041.</del>	<del>Deselect</del>	<del>High density of rad sampling in area; need future additional chemical data to north (metals, dioxins, PCBs, TPH).</del>
<del>Group 1</del>	<del>Surface</del>	<del>108</del>	<del>SRE Complex - West portion. Site 4687.</del>	<del>Potential radiological contamination associated with loading and unloading of radioactive waste in the vicinity of 4041.</del>	<del>Deselect</del>	<del>High density of rad sampling in area; need future additional chemical data to north (metals, dioxins, PCBs, TPH).</del>

Table 1  
Summary of Soil Sample Locations in Subarea 6

Group	Sample Type	Location ID	Location Description	Technical Justification	Co-located Chemical Analytes	Co-located Chemical Sample Rationale
Group 1	Drainage	109	SRE Complex - West portion.	Potential radiological contamination from surface water run-off from the vicinity of former Building 4041.	Primary, alcohols, glycols, terphenyls, TPH	Alcohols, glycols, terphenyls, and TPH added due to operational use.
Group 1	Subsurface	109	SRE Complex - West portion.	Potential radiological contamination from surface water run-off from the vicinity of former Building 4041.	Primary, alcohols, glycols, terphenyls, TPH	Alcohols, glycols, terphenyls, and TPH added due to operational use.
Group 1	Drainage	110	SRE Complex - Southwest portion.	Potential radiological contamination from surface water run-off from the vicinity of former Building 4041.	Primary, alcohols, glycols, terphenyls, TPH	Alcohols, glycols, terphenyls, TPH added in yard for potential storage based on Area IV use.
Group 1	Subsurface	110	SRE Complex - Southwest portion.	Potential radiological contamination from surface water run-off from the vicinity of former Building 4041.	Primary, alcohols, glycols, terphenyls, TPH	Alcohols, glycols, terphenyls, TPH added in yard for potential storage based on Area IV use.
<del>Group 1</del>	<del>Drainage</del>	<del>111</del>	<del>SRE Complex - Southwest portion.</del>	<del>Potential radiological contamination from surface water run-off from the southwestern portion of the SRE Complex.</del>	<del>Deselect</del>	<del>High density of rad sampling in area.</del>
<del>Group 1</del>	<del>Subsurface</del>	<del>111</del>	<del>SRE Complex - Southwest portion.</del>	<del>Potential radiological contamination from surface water run-off from the southwestern portion of the SRE Complex.</del>	<del>Deselect</del>	<del>High density of rad sampling in area.</del>
<del>Group 1</del>	<del>Subsurface</del>	<del>112</del>	<del>SRE Complex - Southern portion.</del>	<del>Process Knowledge - Possible radiological contamination associated with Sanitary Sewer Line.</del>	<del>Deselect</del>	<del>High density of rad sampling in area.</del>
Group 1	Drainage	113	SRE Complex - Southern portion.	Potential radiological contamination from surface water run-off from the southern portion of the SRE Complex.	Primary, alcohols, glycols, terphenyls, TPH	Alcohols, glycols, terphenyls, TPH added due to operational use.
Group 1	Subsurface	113	SRE Complex - Southern portion.	Potential radiological contamination from surface water run-off from the southern portion of the SRE Complex.	Primary, alcohols, glycols, terphenyls, TPH	Alcohols, glycols, terphenyls, TPH added due to operational use.
Group 1	Subsurface	114	SRE Complex - Southern portion.	Process Knowledge - Possible radiological contamination associated with storm drain line.	Primary, alcohols, glycols, terphenyls, TPH	Alcohols, glycols, terphenyls, TPH added in yard for potential storage based on Area IV use.
Group 1	Subsurface	115	SRE Complex - Southern portion.	Process Knowledge - Possible radiological contamination associated with Sanitary Sewer Line.	Primary, alcohols, glycols, terphenyls, TPH	Alcohols, glycols, terphenyls, TPH added in yard for potential storage based on Area IV use.
Group 1	Subsurface	116	SRE Complex - Southern portion.	Process Knowledge - Possible radiological contamination associated with Sanitary Sewer Line.	Primary, alcohols, glycols, terphenyls, TPH	Alcohols, glycols, terphenyls, TPH added in yard for potential storage based on Area IV use.
Group 1	Subsurface	117	SRE Complex - Southern portion.	Process Knowledge - Possible radiological contamination associated with Sanitary Sewer Line.	Primary, alcohols, glycols, terphenyls, TPH	Alcohols, glycols, terphenyls, TPH added in yard for potential storage based on Area IV use.
Group 1	Subsurface	118	SRE Complex - Central Portion.	Location of the former Liquid Waste Sump Tanks. Geophysical Anomaly Feature - Conductivity.	Primary, alcohols, glycols, terphenyls, TPH	Sample location in waste disposal area; refined secondary suite due to existing chemical data. Alcohols, glycols, terphenyls, and TPH added due to operational use.
Group 1	Subsurface	119	SRE Complex - South central portion.	Geophysical Anomaly Feature - Conductivity.	Primary, alcohols, glycols, terphenyls, TPH	Alcohols, glycols, terphenyls, and TPH added due to operational use.
Group 1	Subsurface	120	SRE Complex - South central portion.	Geophysical Anomaly Feature - Conductivity.	Primary, alcohols, glycols, terphenyls, TPH	Alcohols, glycols, terphenyls, TPH added due to operational use.
<del>Group 1</del>	<del>Subsurface</del>	<del>121</del>	<del>SRE Complex - West edge.</del>	<del>Aerial Photo Feature Open Storage.</del>	<del>Deselect</del>	<del>High density of rad sampling in area.</del>
Group 1	Subsurface	122	SRE Complex - West edge.	Aerial Photo Feature - Open Storage.	Primary, alcohols, glycols, terphenyls, TPH	Alcohols, glycols, terphenyls, TPH added in yard for potential storage based on Area IV use.
Group 1	Subsurface	123	SRE Complex - Central Portion, north of the former Reactor Vault.	Potential radiological contamination associated with the former Reactor Vault.	Primary, alcohols, glycols, terphenyls, TPH	Sample location in waste disposal area; refined secondary suite due to existing chemical data. Alcohols, glycols, terphenyls, and TPH added due to operational use.
Group 1	Subsurface	124	SRE Complex - Central Portion, east of the former Reactor Vault.	Potential radiological contamination associated with the former Reactor Vault.	Primary, alcohols, glycols, terphenyls, TPH	Sample location in waste disposal area; refined secondary suite due to existing chemical data. Alcohols, glycols, terphenyls, and TPH added due to operational use.
Group 1	Subsurface	125	SRE Complex - Central Portion, west of the former Reactor Vault.	Potential radiological contamination associated with the former Reactor Vault.	Primary, alcohols, glycols, terphenyls, TPH	Sample location in waste disposal area; refined secondary suite due to existing chemical data. Alcohols, glycols, terphenyls, and TPH added due to operational use.
Group 1	Subsurface	126	SRE Complex - West portion.	Historical Data show elevated Co-60 and Cs-137.	Primary, alcohols, glycols, terphenyls, TPH	Alcohols, glycols, terphenyls, and TPH added due to operational use.
Group 1	Surface	126	SRE Complex - West portion.	Historical Data show elevated Co-60 and Cs-137.	Primary, alcohols, glycols, terphenyls, TPH	Alcohols, glycols, terphenyls, and TPH added due to operational use.
Group 1	Subsurface	127	Liquid and Gas Radioactive Storage Tanks Area.	Approximate location of the Gaseous Storage Tanks.	Primary, alcohols, glycols, terphenyls, TPH	Sample location in known release area; alcohols, glycols, terphenyls, and TPH added due to operational use.
Group 1	Surface	127	Liquid and Gas Radioactive Storage Tanks Area.	Approximate location of the Gaseous Storage Tanks.	Primary, alcohols, glycols, terphenyls, TPH	Alcohols, glycols, terphenyls, and TPH added due to operational use.
Group 1	Subsurface	128	Liquid and Gas Radioactive Storage Tanks Area.	Geophysical Anomaly Feature - Conductivity. Approximate location of the Gaseous Storage Tanks.	Primary, alcohols, glycols, terphenyls, TPH	Alcohols, glycols, terphenyls, and TPH added due to operational use.
Group 1	Surface	128	Liquid and Gas Radioactive Storage Tanks Area.	Geophysical Anomaly Feature - Conductivity. Approximate location of the Gaseous Storage Tanks.	Primary, alcohols, glycols, terphenyls, TPH	Alcohols, glycols, terphenyls, and TPH added due to operational use.
<del>Group 1</del>	<del>Subsurface</del>	<del>129</del>	<del>Liquid and Gas Radioactive Storage Tanks Area.</del>	<del>Approximate location of the Liquid Radioactive Storage Tanks.</del>	<del>Deselect</del>	<del>High density of rad sampling in area.</del>
<del>Group 1</del>	<del>Surface</del>	<del>129</del>	<del>Liquid and Gas Radioactive Storage Tanks Area.</del>	<del>Approximate location of the Liquid Radioactive Storage Tanks.</del>	<del>Deselect</del>	<del>High density of rad sampling in area.</del>
<del>Group 1</del>	<del>Subsurface</del>	<del>130</del>	<del>Liquid and Gas Radioactive Storage Tanks Area.</del>	<del>Approximate location of the Liquid Radioactive Storage Tanks.</del>	<del>Deselect</del>	<del>High density of rad sampling in area.</del>
<del>Group 1</del>	<del>Surface</del>	<del>130</del>	<del>Liquid and Gas Radioactive Storage Tanks Area.</del>	<del>Approximate location of the Liquid Radioactive Storage Tanks.</del>	<del>Deselect</del>	<del>High density of rad sampling in area.</del>
<del>Group 1</del>	<del>Subsurface</del>	<del>131</del>	<del>Liquid and Gas Radioactive Storage Tanks Area.</del>	<del>Approximate location of the Gaseous Storage Tanks.</del>	<del>Deselect</del>	<del>High density of rad sampling in area.</del>
<del>Group 1</del>	<del>Surface</del>	<del>131</del>	<del>Liquid and Gas Radioactive Storage Tanks Area.</del>	<del>Approximate location of the Gaseous Storage Tanks.</del>	<del>Deselect</del>	<del>High density of rad sampling in area.</del>
<del>Group 1</del>	<del>Subsurface</del>	<del>132</del>	<del>Liquid and Gas Radioactive Storage Tanks Area.</del>	<del>Geophysical Anomaly Feature Conductivity. Approximate location of the Liquid Radioactive Storage Tanks.</del>	<del>Deselect</del>	<del>High density of rad sampling in area.</del>
<del>Group 1</del>	<del>Surface</del>	<del>132</del>	<del>Liquid and Gas Radioactive Storage Tanks Area.</del>	<del>Geophysical Anomaly Feature - Conductivity. Approximate location of the Liquid Radioactive Storage Tanks.</del>	<del>Deselect</del>	<del>High density of rad sampling in area.</del>
Group 1	Subsurface	133	Liquid and Gas Radioactive Storage Tanks Area.	Approximate location of the Hold-up Vaults.	Primary, alcohols, glycols, terphenyls, TPH	Sample location in known release area; alcohols, glycols, terphenyls, and TPH added due to operational use.
Group 1	Surface	133	Liquid and Gas Radioactive Storage Tanks Area.	Approximate location of the Hold-up Vaults.	Primary, alcohols, glycols, terphenyls, TPH	Alcohols, glycols, terphenyls, and TPH added due to operational use.
Group 1	Subsurface	134	Liquid and Gas Radioactive Storage Tanks Area.	Approximate location of the Hold-up Vaults.	Primary, alcohols, glycols, terphenyls, TPH	Alcohols, glycols, terphenyls, and TPH added due to operational use.
Group 1	Surface	134	Liquid and Gas Radioactive Storage Tanks Area.	Approximate location of the Hold-up Vaults.	Primary, alcohols, glycols, terphenyls, TPH	Alcohols, glycols, terphenyls, and TPH added due to operational use.
Group 1	Subsurface	135	Solid Radioactive Waste Storage - East side of concrete pad.	Potential contamination originating from storage activities.	Primary, alcohols, glycols, terphenyls, TPH	Alcohols, glycols, terphenyls, and TPH added due to operational use/ liquid waste storage.
Group 1	Subsurface	136	Solid Radioactive Waste Storage - West side of concrete pad.	Potential contamination originating from storage activities.	Primary, alcohols, glycols, terphenyls, TPH	Alcohols, glycols, terphenyls, and TPH added due to operational use.
Group 1	Subsurface	137	Solid Radioactive Waste Storage - North side of concrete pad.	Potential contamination originating from storage activities.	Primary, alcohols, glycols, terphenyls, TPH	Alcohols, glycols, terphenyls, and TPH added due to operational use/ liquid waste storage.

Table 1  
Summary of Soil Sample Locations in Subarea 6

Group	Sample Type	Location ID	Location Description	Technical Justification	Co-located Chemical Analytes	Co-located Chemical Sample Rationale
Group 1	Subsurface	138	Solid Radioactive Waste Storage - South side of concrete pad.	Potential contamination originating from storage activities.	Primary, alcohols, glycols, terphenyls, TPH	Alcohols, glycols, terphenyls, and TPH added due to operational use.
Group 1	Subsurface	139	Solid Radioactive Waste Storage - Southwest of concrete pad.	Potential contamination originating from storage activities may have migrated downgradient.	Primary, alcohols, glycols, terphenyls, TPH	Alcohols, glycols, terphenyls, and TPH added due to operational use.
Group 1	Subsurface	140	Debris field north of the Solid Radioactive Waste Storage.	Potential radiological contamination within debris found during site reconnaissance.	Primary, alcohols, glycols, terphenyls, TPH	Sample location in excavation backfill. Only analyze deep sample located at bedrock interface if bedrock encountered. If bedrock is not encountered, <b>DO NOT COLLECT SAMPLE</b> . Alcohols, glycols, terphenyls, and TPH added due to operational use.
Group 1	Subsurface	141	Debris field north of the Solid Radioactive Waste Storage.	Potential radiological contamination within debris found during site reconnaissance.	Primary, alcohols, glycols, terphenyls, TPH	Sample location in excavation backfill. Only analyze deep sample located at bedrock interface if bedrock encountered. If bedrock is not encountered, <b>DO NOT COLLECT SAMPLE</b> . Alcohols, glycols, terphenyls, and TPH added due to operational use.
Group 1	Subsurface	142	Liquid and Gas Radioactive Storage Tanks Area.	Geophysical Anomaly Feature - Conductivity. Approximate location of the Liquid Radioactive Storage Tanks.	Primary, alcohols, glycols, terphenyls, TPH	Alcohols, glycols, terphenyls, and TPH added due to operational use.
Group 1	Surface	142	Liquid and Gas Radioactive Storage Tanks Area.	Geophysical Anomaly Feature - Conductivity. Approximate location of the Liquid Radioactive Storage Tanks.	Primary, alcohols, glycols, terphenyls, TPH	Alcohols, glycols, terphenyls, and TPH added due to operational use.
Group 1	Subsurface	143	Liquid and Gas Radioactive Storage Tanks Area.	Geophysical Anomaly Feature - Conductivity. Approximate location of the Liquid Radioactive Storage Tanks.	Primary, alcohols, glycols, terphenyls, TPH	Sample location in known release area; alcohols, glycols, terphenyls, and TPH added due to operational use.
Group 1	Surface	143	Liquid and Gas Radioactive Storage Tanks Area.	Geophysical Anomaly Feature - Conductivity. Approximate location of the Liquid Radioactive Storage Tanks.	Primary, alcohols, glycols, terphenyls, TPH	Sample location in known release area; alcohols, glycols, terphenyls, and TPH added due to operational use.
<del>Group 1</del>	<del>Subsurface</del>	<del>144</del>	<del>Liquid and Gas Radioactive Storage Tanks Area.</del>	<del>Downgradient of PGRAY 8.</del>	<del>Deselect</del>	<del>High density of rad sampling in area.</del>
<del>Group 1</del>	<del>Surface</del>	<del>144</del>	<del>Liquid and Gas Radioactive Storage Tanks Area.</del>	<del>Downgradient of PGRAY 8.</del>	<del>Deselect</del>	<del>High density of rad sampling in area.</del>
Group 1	Subsurface	145	Liquid and Gas Radioactive Storage Tanks Area.	Between PGRAY 5 and 8. Geophysical Anomaly Feature - Conductivity.	Primary, alcohols, glycols, terphenyls, TPH	Alcohols, glycols, terphenyls, and TPH added due to operational use.
Group 1	Surface	145	Liquid and Gas Radioactive Storage Tanks Area.	Between PGRAY 5 and 8. Geophysical Anomaly Feature - Conductivity.	Primary, alcohols, glycols, terphenyls, TPH	Alcohols, glycols, terphenyls, and TPH added due to operational use.
Group 1	Subsurface	146	Liquid and Gas Radioactive Storage Tanks Area.	Downgradient of PGRAY 8.	Primary, alcohols, glycols, terphenyls, TPH	Alcohols, glycols, terphenyls, and TPH added due to operational use.
Group 1	Surface	146	Liquid and Gas Radioactive Storage Tanks Area.	Downgradient of PGRAY 8.	Primary, alcohols, glycols, terphenyls, TPH	Alcohols, glycols, terphenyls, and TPH added due to operational use.
Group 1	Subsurface	147	Liquid and Gas Radioactive Storage Tanks Area.	Former location of drainage ditch that diverted surface water to the east and down slope.	Primary, alcohols, glycols, terphenyls, TPH	Sample location in waste disposal area; refined secondary suite due to existing chemical data. Alcohols, glycols, terphenyls, and TPH added due to operational use.
Group 1	Surface	147	Liquid and Gas Radioactive Storage Tanks Area.	Former location of drainage ditch that diverted surface water to the east and down slope.	Primary, alcohols, glycols, terphenyls, TPH	Sample location in waste disposal area; refined secondary suite due to existing chemical data. Alcohols, glycols, terphenyls, and TPH added due to operational use.
Group 1	Subsurface	148	Liquid and Gas Radioactive Storage Tanks Area.	Former location of drainage ditch that diverted surface water to the east and down slope.	Primary, alcohols, glycols, terphenyls, TPH	Sample location in waste disposal area; refined secondary suite due to existing chemical data. Alcohols, glycols, terphenyls, and TPH added due to operational use.
Group 1	Surface	148	Liquid and Gas Radioactive Storage Tanks Area.	Former location of drainage ditch that diverted surface water to the east and down slope.	Primary, alcohols, glycols, terphenyls, TPH	Sample location in waste disposal area; refined secondary suite due to existing chemical data. Alcohols, glycols, terphenyls, and TPH added due to operational use.
Group 1	Subsurface	149	Liquid and Gas Radioactive Storage Tanks Area.	Former location of drainage ditch that diverted surface water to the east and down slope.	Primary, alcohols, glycols, terphenyls, TPH	Alcohols, glycols, terphenyls, and TPH added due to operational use.
Group 1	Surface	149	Liquid and Gas Radioactive Storage Tanks Area.	Former location of drainage ditch that diverted surface water to the east and down slope.	Primary, alcohols, glycols, terphenyls, TPH	Alcohols, glycols, terphenyls, and TPH added due to operational use.
Group 1	Subsurface	150	SRE Complex - Northeast corner.	Upgradient of PGREY 10.	Primary, alcohols, glycols, terphenyls, TPH	Alcohols, glycols, terphenyls, TPH added due to operational use.
Group 1	Surface	150	SRE Complex - Northeast corner.	Upgradient of PGREY 9.	Primary, alcohols, glycols, terphenyls, TPH	Alcohols, glycols, terphenyls, TPH added due to operational use.
Group 2	Drainage	151	Contaminated Laundry Building.	Potential radiological contamination from the disposal of water used to wash contaminated laundry.	Primary	
Group 2	Subsurface	151	Contaminated Laundry Building.	Potential radiological contamination from the disposal of water used to wash contaminated laundry.	Primary	
Group 2	Subsurface	152	Contaminated Laundry Building.	Potential radiological contamination from the disposal of water used to wash contaminated laundry.	Primary	
Group 2	Surface	152	Contaminated Laundry Building.	Potential radiological contamination from the disposal of water used to wash contaminated laundry.	Primary	
<del>Group 2</del>	<del>Subsurface</del>	<del>153</del>	<del>East of the Contaminated Laundry Building.</del>	<del>Geophysical Anomaly Feature - Conductivity and Magnetometer.</del>	<del>Deselect</del>	<del>Existing chemical data in the area; need future additional PCB data.</del>
<del>Group 2</del>	<del>Surface</del>	<del>153</del>	<del>East of the Contaminated Laundry Building.</del>	<del>Geophysical Anomaly Feature - Conductivity and Magnetometer.</del>	<del>Deselect</del>	<del>Existing chemical data in the area.</del>
Group 2	Subsurface	154	East of the Contaminated Laundry Building.	Geophysical Anomaly Feature - Magnetometer.	Primary	
Group 2	Surface	154	East of the Contaminated Laundry Building.	Geophysical Anomaly Feature - Magnetometer.	Primary	
Group 2	Subsurface	155	Contaminated Laundry Building.	Downgradient of Contaminated Laundry Building. Potential radiological contamination from the disposal of water used to wash contaminated laundry.	Primary	
Group 2	Surface	155	Contaminated Laundry Building.	Downgradient of Contaminated Laundry Building. Potential radiological contamination from the disposal of water used to wash contaminated laundry.	Primary	
Group 3	Subsurface	156	Fuel Storage Facility.	Geophysical Anomaly Feature - Conductivity and Magnetometer. Slightly elevated gamma scanning survey readings.	Primary, alcohols, glycols, terphenyls, TPH	Alcohols, glycols, terphenyls and TPH added due to operational use in area.
Group 3	Surface	156	Fuel Storage Facility.	Geophysical Anomaly Feature - Conductivity and Magnetometer. Slightly elevated gamma scanning survey readings.	Primary, alcohols, glycols, terphenyls, TPH	Alcohols, glycols, terphenyls and TPH added due to operational use in area.
Group 3	Subsurface	157	Fuel Storage Facility.	Geophysical Anomaly Feature - Conductivity, Magnetometer and GPR. Slightly elevated gamma scanning survey readings.	Primary, alcohols, glycols, terphenyls, TPH	Alcohols, glycols, terphenyls and TPH added due to operational use in area.
Group 3	Surface	157	Fuel Storage Facility.	Geophysical Anomaly Feature - Conductivity, Magnetometer and GPR. Slightly elevated gamma scanning survey readings.	Primary, alcohols, glycols, terphenyls, TPH	Alcohols, glycols, terphenyls and TPH added due to operational use in area.
<del>Group 3</del>	<del>Subsurface</del>	<del>158</del>	<del>Fuel Storage Facility.</del>	<del>Geophysical Anomaly Feature - Magnetometer and Ground Penetrating Radar.</del>	<del>Deselect</del>	<del>High density of rad sampling, existing chemical data in area.</del>
<del>Group 3</del>	<del>Surface</del>	<del>158</del>	<del>Fuel Storage Facility.</del>	<del>Geophysical Anomaly Feature - Magnetometer and Ground Penetrating Radar.</del>	<del>Deselect</del>	<del>High density of rad sampling, existing chemical data in area.</del>

Table 1  
Summary of Soil Sample Locations in Subarea 6

Group	Sample Type	Location ID	Location Description	Technical Justification	Co-located Chemical Analytes	Co-located Chemical Sample Rationale
Group 3	Subsurface	159	Fuel Storage Facility.	Location of the former septic tank and leach field. Geophysical Anomaly Feature - Magnetometer.	Primary, alcohols, glycols, terphenyls, TPH	Alcohols, glycols, terphenyls and TPH added due to operational use in area.
Group 3	Surface	159	Fuel Storage Facility.	Location of the former septic tank and leach field. Geophysical Anomaly Feature - Magnetometer.	Primary, alcohols, glycols, terphenyls, TPH	Alcohols, glycols, terphenyls and TPH added due to operational use in area.
Group 3	Subsurface	160	Fuel Storage Facility.	Location of the former septic tank and leach field. Geophysical Anomaly Feature - Magnetometer.	Primary, alcohols, glycols, terphenyls, TPH	Alcohols, glycols, terphenyls and TPH added due to operational use in area.
Group 3	Surface	160	Fuel Storage Facility.	Location of the former septic tank and leach field. Geophysical Anomaly Feature - Magnetometer.	Primary, alcohols, glycols, terphenyls, TPH	Alcohols, glycols, terphenyls and TPH added due to operational use in area.
<del>Group 3</del>	<del>Subsurface</del>	<del>161</del>	<del>Fuel Storage Facility.</del>	<del>Geophysical Anomaly Feature - Magnetometer. Slightly elevated gamma scanning survey readings.</del>	<del>Deselect</del>	<del>High density of rad sampling, existing chemical data in area.</del>
<del>Group 3</del>	<del>Surface</del>	<del>161</del>	<del>Fuel Storage Facility.</del>	<del>Geophysical Anomaly Feature - Magnetometer. Slightly elevated gamma scanning survey readings.</del>	<del>Deselect</del>	<del>High density of rad sampling, existing chemical data in area.</del>
Group 3	Subsurface	162	Fuel Storage Facility.	Geophysical Anomaly Feature - Magnetometer and GPR.	Primary, alcohols, glycols, terphenyls, TPH	Alcohols, glycols, terphenyls and TPH added due to operational use in area.
Group 3	Surface	162	Fuel Storage Facility.	Geophysical Anomaly Feature - Magnetometer and GPR.	Primary, alcohols, glycols, terphenyls, TPH	Alcohols, glycols, terphenyls and TPH added due to operational use in area.
<del>Group 3</del>	<del>Subsurface</del>	<del>163</del>	<del>Fuel Storage Facility.</del>	<del>Potential radiological contamination associated with storing radioactive fuel within former Building 4064.</del>	<del>Deselect</del>	<del>High density of rad sampling, existing chemical data in area.</del>
<del>Group 3</del>	<del>Surface</del>	<del>163</del>	<del>Fuel Storage Facility.</del>	<del>Potential radiological contamination associated with storing radioactive fuel within former Building 4064.</del>	<del>Deselect</del>	<del>High density of rad sampling, existing chemical data in area.</del>
Group 3	Subsurface	164	Fuel Storage Facility.	Aerial Photo Feature - Open Storage. Downgradient of the former septic tank and leach field. Historic data shows elevated readings of Cs-137.	Primary, alcohols, glycols, terphenyls, TPH	Alcohols, glycols, terphenyls and TPH added due to operational use in area.
Group 3	Surface	164	Fuel Storage Facility.	Aerial Photo Feature - Open Storage. Downgradient of the former septic tank and leach field. Historic data shows elevated readings of Cs-137.	Primary, alcohols, glycols, terphenyls, TPH	Alcohols, glycols, terphenyls and TPH added due to operational use in area.
Group 3	Subsurface	165	Fuel Storage Facility.	Geophysical Anomaly Feature - Conductivity.	Primary, alcohols, glycols, terphenyls, TPH	Alcohols, glycols, terphenyls and TPH added due to operational use in area.
Group 3	Surface	165	Fuel Storage Facility.	Geophysical Anomaly Feature - Conductivity.	Primary, alcohols, glycols, terphenyls, TPH	Alcohols, glycols, terphenyls and TPH added due to operational use in area.
Group 3	Subsurface	166	Fuel Storage Facility.	Geophysical Anomaly Feature - Conductivity and Magnetometer.	Primary, alcohols, glycols, terphenyls, TPH	Alcohols, glycols, terphenyls and TPH added due to operational use in area.
Group 3	Surface	166	Fuel Storage Facility.	Geophysical Anomaly Feature - Conductivity and Magnetometer.	Primary, alcohols, glycols, terphenyls, TPH	Alcohols, glycols, terphenyls, and TPH added due to operational use.
Group 3	Subsurface	167	Fuel Storage Facility.	Aerial Photo Feature - Possible Open Storage.	Primary, alcohols, glycols, terphenyls, TPH	Alcohols, glycols, terphenyls, and TPH added due to operational use.
Group 3	Surface	167	Fuel Storage Facility.	Aerial Photo Feature - Possible Open Storage.	Primary, alcohols, glycols, terphenyls, TPH	Alcohols, glycols, terphenyls, and TPH added due to operational use.
Group 3	Subsurface	168	Sodium Storage Building.	Potential radiological contamination originating from former Parking lot 4513 and possibly Building 4064.	Primary, alcohols, glycols, terphenyls, TPH	Alcohols, glycols, terphenyls, and TPH added due to operational use.
Group 3	Surface	168	Sodium Storage Building.	Potential radiological contamination originating from former Parking lot 4513 and possibly Building 4064.	Primary, alcohols, glycols, terphenyls, TPH	Alcohols, glycols, terphenyls, and TPH added due to operational use.
Group 3	Subsurface	169	Sodium Storage Building.	Potential radiological contamination originating from former Parking lot 4513 and possibly Building 4064.	Primary, alcohols, glycols, terphenyls, TPH	Alcohols, glycols, terphenyls, and TPH added due to operational use.
Group 3	Surface	169	Sodium Storage Building.	Potential radiological contamination originating from former Parking lot 4513 and possibly Building 4064.	Primary, alcohols, glycols, terphenyls, TPH	Alcohols, glycols, terphenyls, and TPH added due to operational use.
<del>Group 3</del>	<del>Subsurface</del>	<del>170</del>	<del>Sodium Storage Building.</del>	<del>Potential radiological contamination originating from former Parking lot 4513 and possibly Building 4064.</del>	<del>Deselect</del>	<del>High density of rad sampling, existing chemical data in area.</del>
<del>Group 3</del>	<del>Surface</del>	<del>170</del>	<del>Sodium Storage Building.</del>	<del>Potential radiological contamination originating from former Parking lot 4513 and possibly Building 4064.</del>	<del>Deselect</del>	<del>High density of rad sampling, existing chemical data in area.</del>
Group 3	Subsurface	171	Sodium Storage Building.	Potential radiological contamination originating from former Parking lot 4513 and possibly Building 4064.	Primary, alcohols, glycols, terphenyls, TPH	Alcohols, glycols, terphenyls, and TPH added due to operational use/ liquid waste storage.
Group 3	Surface	171	Sodium Storage Building.	Potential radiological contamination originating from former Parking lot 4513 and possibly Building 4064.	Primary, alcohols, glycols, terphenyls, TPH	Alcohols, glycols, terphenyls, and TPH added due to operational use/ liquid waste storage.
Group 3	Drainage	172	Sodium Storage Building.	Potential radiological contamination originating from former Parking lot 4513 and possibly Building 4064.	Primary	
Group 3	Subsurface	172	Sodium Storage Building.	Potential radiological contamination originating from former Parking lot 4513 and possibly Building 4064.	Primary	
<del>Group 4</del>	<del>Drainage</del>	<del>173</del>	<del>Contaminated Medical/Storage Facility.</del>	<del>Potential for radionuclides to migrate via surface water run-off from the Contaminated Medical Storage Facility.</del>	<del>Deselect</del>	<del>Existing chemical data in the area.</del>
<del>Group 4</del>	<del>Subsurface</del>	<del>173</del>	<del>Contaminated Medical/Storage Facility.</del>	<del>Potential for radionuclides to migrate via surface water run-off from the Contaminated Medical Storage Facility.</del>	<del>Deselect</del>	<del>Existing chemical data in the area.</del>
Group 2	Subsurface	174	Contaminated Laundry Building.	Potential radiological contamination from the disposal of water used to wash contaminated laundry.	Primary	
Group 2	Surface	174	Contaminated Laundry Building.	Potential radiological contamination from the disposal of water used to wash contaminated laundry.	Primary	
<del>Group 2</del>	<del>Subsurface</del>	<del>175</del>	<del>Contaminated Laundry Building.</del>	<del>Potential radiological contamination from the disposal of water used to wash contaminated laundry.</del>	<del>Deselect</del>	<del>High density of rad sampling, existing chemical data in area.</del>
<del>Group 2</del>	<del>Surface</del>	<del>175</del>	<del>Contaminated Laundry Building.</del>	<del>Potential radiological contamination from the disposal of water used to wash contaminated laundry.</del>	<del>Deselect</del>	<del>High density of rad sampling, existing chemical data in area.</del>
Group 2	Subsurface	176	Contaminated Laundry Building.	Potential radiological contamination from the disposal of water used to wash contaminated laundry.	Primary	
Group 2	Surface	176	Contaminated Laundry Building.	Potential radiological contamination from the disposal of water used to wash contaminated laundry.	Primary	



Table 1  
Summary of Soil Sample Locations in Subarea 6

Group	Sample Type	Location ID	Location Description	Technical Justification	Co-located Chemical Analytes	Co-located Chemical Sample Rationale
Group 2	Subsurface	177	Contaminated Laundry Building.	Downgradient of Contaminated Laundry Building. Potential radiological contamination from the disposal of water used to wash contaminated laundry.	Deselect	High density of rad sampling, existing chemical data in area.
Group 2	Surface	177	Contaminated Laundry Building.	Downgradient of Contaminated Laundry Building. Potential radiological contamination from the disposal of water used to wash contaminated laundry.	Deselect	High density of rad sampling, existing chemical data in area.
Group 2	Subsurface	178	Contaminated Laundry Building.	Downgradient of Contaminated Laundry Building. Potential radiological contamination from the disposal of water used to wash contaminated laundry.	Primary	
Group 2	Surface	178	Contaminated Laundry Building.	Downgradient of Contaminated Laundry Building. Potential radiological contamination from the disposal of water used to wash contaminated laundry.	Primary	
Group 2	Subsurface	179	Contaminated Laundry Building.	Downgradient of Contaminated Laundry Building. Potential radiological contamination from the disposal of water used to wash contaminated laundry.	Deselect	Existing chemical data in the area; need additional PCB data.
Group 2	Surface	179	Contaminated Laundry Building.	Downgradient of Contaminated Laundry Building. Potential radiological contamination from the disposal of water used to wash contaminated laundry.	Deselect	Existing chemical data in the area; need additional PCB data.
Group 2	Subsurface	180	Contaminated Laundry Building.	Downgradient of Contaminated Laundry Building. Potential radiological contamination from the disposal of water used to wash contaminated laundry.	Deselect	Existing chemical data in the area; need additional PCB data.
Group 2	Surface	180	Contaminated Laundry Building.	Downgradient of Contaminated Laundry Building. Potential radiological contamination from the disposal of water used to wash contaminated laundry.	Deselect	Existing chemical data in the area; need additional PCB data.
Group 2	Subsurface	181	Contaminated Laundry Building.	Downgradient of Contaminated Laundry Building. Potential radiological contamination from the disposal of water used to wash contaminated laundry.	Deselect	Existing chemical data in the area; need additional PCB data.
Group 2	Surface	181	Contaminated Laundry Building.	Downgradient of Contaminated Laundry Building. Potential radiological contamination from the disposal of water used to wash contaminated laundry.	Deselect	Existing chemical data in the area; need additional PCB data.
Group 2	Subsurface	182	Electronics Shop Maintenance Service Building.	Within the footprint of former Building 4063 which use to be part of the Old Radioactive Laundry. Downgradient of Contaminated Laundry Building.	Primary	
Group 2	Surface	182	Electronics Shop Maintenance Service Building.	Within the footprint of former Building 4063 which use to be part of the Old Radioactive Laundry. Downgradient of Contaminated Laundry Building.	Primary	
Group 2	Subsurface	183	Electronics Shop Maintenance Service Building.	Within the footprint of former Building 4063 which use to be part of the Old Radioactive Laundry. Downgradient of Contaminated Laundry Building.	Primary	
Group 2	Surface	183	Electronics Shop Maintenance Service Building.	Within the footprint of former Building 4063 which use to be part of the Old Radioactive Laundry. Downgradient of Contaminated Laundry Building.	Primary	
Group 2	Subsurface	184	Contaminated Laundry Building.	Potential radiological contamination from the disposal of water used to wash contaminated laundry.	Primary	
Group 2	Surface	184	Contaminated Laundry Building.	Potential radiological contamination from the disposal of water used to wash contaminated laundry.	Primary	
Group 2	Drainage	185	Contaminated Laundry Building.	Downgradient of Contaminated Laundry Building. Potential radiological contamination from the disposal of water used to wash contaminated laundry.	Primary	
Group 2	Subsurface	185	Contaminated Laundry Building.	Downgradient of Contaminated Laundry Building. Potential radiological contamination from the disposal of water used to wash contaminated laundry.	Primary	
Group 2	Subsurface	186	Contaminated Laundry Building.	Downgradient of Contaminated Laundry Building. Potential radiological contamination from the disposal of water used to wash contaminated laundry.	Deselect	High density of rad sampling in area.
Group 2	Surface	186	Contaminated Laundry Building.	Downgradient of Contaminated Laundry Building. Potential radiological contamination from the disposal of water used to wash contaminated laundry.	Deselect	High density of rad sampling in area.
Group 2	Subsurface	187	Contaminated Laundry Building.	Downgradient of Contaminated Laundry Building and the Old Radioactive Laundry. Potential radiological contamination from the disposal of water used to wash contaminated laundry.	Deselect	High density of rad sampling in area.
Group 2	Surface	187	Contaminated Laundry Building.	Downgradient of Contaminated Laundry Building and the Old Radioactive Laundry. Potential radiological contamination from the disposal of water used to wash contaminated laundry.	Deselect	High density of rad sampling in area.
Group 3	Subsurface	188	Fuel Storage Facility - North of former Building 4064.	Aerial Photo Feature - Open Storage. Slightly elevated gamma scanning survey readings.	Deselect	High density of rad sampling, existing chemical data in area.
Group 3	Surface	188	Fuel Storage Facility - North of former Building 4064.	Aerial Photo Feature - Open Storage. Slightly elevated gamma scanning survey readings.	Deselect	High density of rad sampling, existing chemical data in area.
Group 3	Drainage	189	Fuel Storage Facility.	Potential radiological contamination from surface water run-off from the Fuel Storage Facility and former Parking Lot 4513.	Deselect	Existing chemical data in the area.
Group 3	Subsurface	189	Fuel Storage Facility.	Potential radiological contamination from surface water run-off from the Fuel Storage Facility and former Parking Lot 4513.	Deselect	Existing chemical data in the area.
Group 2	Subsurface	190	Old Conservation Yard - Northwest portion.	Historical photograph of Old Conservation Yard. Slightly elevated gamma survey readings. Boundary of Chemical Likely Remediation Zone.	Primary and Secondary	Secondary suite added since location targets waste storage area.
Group 2	Surface	190	Old Conservation Yard - Northwest portion.	Historical photograph of Old Conservation Yard. Slightly elevated gamma survey readings. Boundary of Chemical Likely Remediation Zone.	Primary and Secondary	Secondary suite added since location targets waste storage area.
Group 2	Subsurface	191	Old Conservation Yard - Northwest portion.	Historical photograph of Old Conservation Yard. Boundary of Chemical Likely Remediation Zone.	Primary and Secondary	Secondary suite added since location targets waste storage area.
Group 5	Subsurface	192	Old Conservation Yard - Northwest portion.	Historical photograph of Old Conservation Yard. Slightly elevated gamma survey readings. Boundary of Chemical Likely Remediation Zone.	Primary and Secondary	Secondary suite added since location targets waste storage area.
Group 5	Surface	192	Old Conservation Yard - Northwest portion.	Historical photograph of Old Conservation Yard. Slightly elevated gamma survey readings. Boundary of Chemical Likely Remediation Zone.	Primary and Secondary	Secondary suite added since location targets waste storage area.
Group 5	Subsurface	193	Old Conservation Yard - North central portion.	Historical photograph of Old Conservation Yard. Aerial Photo Feature - Open Storage. Geophysical Anomaly Feature - Conductivity.	Primary and Secondary	Secondary suite added since location targets waste storage area.
Group 5	Surface	193	Old Conservation Yard - North central portion.	Historical photograph of Old Conservation Yard. Aerial Photo Feature - Open Storage. Geophysical Anomaly Feature - Conductivity.	Primary and Secondary	Secondary suite added since location targets waste storage area.
Group 5	Subsurface	194	Old Conservation Yard - North central portion.	Historical photograph of Old Conservation Yard. Aerial Photo Feature - Open Storage. Geophysical Anomaly Feature - Conductivity.	Deselect	High density of rad sampling in area.
Group 5	Surface	194	Old Conservation Yard - North central portion.	Historical photograph of Old Conservation Yard. Aerial Photo Feature - Open Storage. Geophysical Anomaly Feature - Conductivity.	Deselect	High density of rad sampling in area.

Table 1  
Summary of Soil Sample Locations in Subarea 6

Group	Sample Type	Location ID	Location Description	Technical Justification	Co-located Chemical Analytes	Co-located Chemical Sample Rationale
Group 5	Subsurface	195	Old Conservation Yard - Central portion.	Historical photograph of Old Conservation Yard. Aerial Photo Feature - Open Storage. Geophysical Anomaly Feature - Ground Penetrating Radar.	Primary and Secondary	Secondary suite added since location targets waste storage area.
<del>Group 5</del>	<del>Subsurface</del>	<del>196</del>	<del>Old Conservation Yard - Central portion.</del>	<del>Historical photograph of Old Conservation Yard. Aerial Photo Feature - Open Storage. Geophysical Anomaly Feature - Magnetometer.</del>	<del>Deselect</del>	<del>High density of rad sampling in area.</del>
Group 5	Subsurface	197	Old Conservation Yard - Central portion.	Historical photograph of Old Conservation Yard. Aerial Photo Feature - Open Storage. Geophysical Anomaly Feature - Conductivity.	Primary and Secondary	Secondary suite added since location targets waste storage area.
Group 5	Subsurface	198	Old Conservation Yard - Central portion.	Historical photograph of Old Conservation Yard. Aerial Photo Feature - Open Storage. Geophysical Anomaly Feature - Conductivity.	Primary and Secondary	Secondary suite added since location targets waste storage area.
Group 5	Subsurface	199	Old Conservation Yard - Central portion.	Historical photograph of Old Conservation Yard. Aerial Photo Feature - Open Storage. Geophysical Anomaly Feature - Conductivity.	Primary and Secondary	Secondary suite added since location targets waste storage area.
Group 5	Subsurface	200	Old Conservation Yard - Central portion.	Historical photograph of Old Conservation Yard. Aerial Photo Feature - Open Storage. Geophysical Anomaly Feature - Conductivity.	Primary and Secondary	Secondary suite added since location targets waste storage area.
Group 5	Subsurface	201	Old Conservation Yard - Central portion.	Historical photograph of Old Conservation Yard. Aerial Photo Feature - Open Storage. Geophysical Anomaly Feature - Conductivity.	Primary and Secondary	Secondary suite added since location targets waste storage area.
<del>Group 5</del>	<del>Subsurface</del>	<del>202</del>	<del>Old Conservation Yard - Eastern portion.</del>	<del>Historical photograph of Old Conservation Yard. Aerial Photo Feature - Debris Pile. Boundary of Chemical Likely Remediation Zone.</del>	<del>Deselect</del>	<del>Sample location in identified chemical contamination area.</del>
<del>Group 5</del>	<del>Subsurface</del>	<del>203</del>	<del>Old Conservation Yard - Eastern portion.</del>	<del>Historical photograph of Old Conservation Yard. Aerial Photo Feature - Debris Pile. Boundary of Chemical Likely Remediation Zone.</del>	<del>Deselect</del>	<del>Sample location in identified chemical contamination area.</del>
Group 5	Subsurface	204	Old Conservation Yard - Eastern portion.	Historical photograph of Old Conservation Yard. Aerial Photo Feature - Debris Pile. Slightly elevated gamma scanning survey readings.	Primary and Secondary	Secondary suite added since location targets waste storage area.
Group 5	Surface	204	Old Conservation Yard - Eastern portion.	Historical photograph of Old Conservation Yard. Aerial Photo Feature - Debris Pile. Slightly elevated gamma scanning survey readings.	Primary and Secondary	Secondary suite added since location targets waste storage area.
Group 5	Subsurface	205	Old Conservation Yard - Eastern portion.	Historical photograph of Old Conservation Yard. Aerial Photo Feature - Open Storage. Slightly elevated gamma scanning survey readings.	Primary and Secondary	Secondary suite added since location targets waste storage area.
Group 5	Surface	205	Old Conservation Yard - Eastern portion.	Historical photograph of Old Conservation Yard. Aerial Photo Feature - Open Storage. Slightly elevated gamma scanning survey readings.	Primary and Secondary	Secondary suite added since location targets waste storage area.
Group 5	Subsurface	206	Old Conservation Yard - Central portion.	Historical photograph of Old Conservation Yard. Aerial Photo Feature - Storage Tank. Geophysical Anomaly Feature - Conductivity.	Primary and Secondary	Secondary suite added since location targets waste storage area.
Group 5	Surface	206	Old Conservation Yard - Central portion.	Historical photograph of Old Conservation Yard. Aerial Photo Feature - Storage Tank. Geophysical Anomaly Feature - Conductivity.	Primary and Secondary	Secondary suite added since location targets waste storage area.
<del>Group 5</del>	<del>Subsurface</del>	<del>207</del>	<del>Old Conservation Yard - Central portion.</del>	<del>Historical photograph of Old Conservation Yard. Aerial Photo Feature - Open Storage. Boundary of Chemical Likely Remediation Zone.</del>	<del>Deselect</del>	<del>Location 206 preferred as bounding sample location for clearly contaminated area since in location of former excavation.</del>
Group 5	Subsurface	208	Old Conservation Yard - Central portion.	Historical photograph of Old Conservation Yard. Aerial Photo Feature - Open Storage. Geophysical Anomaly Feature - Ground Penetrating Radar.	Primary and Secondary	Secondary suite added since location targets waste storage area.
<del>Group 5</del>	<del>Subsurface</del>	<del>209</del>	<del>Old Conservation Yard - Central portion.</del>	<del>Historical photograph of Old Conservation Yard. Aerial Photo Feature - Open Storage. Geophysical Anomaly Feature - Conductivity.</del>	<del>Deselect</del>	<del>High density of rad sampling, existing chemical data in area; additional chemical sampling needed to east.</del>
Group 5	Subsurface	210	Old Conservation Yard - Central portion.	Historical photograph of Old Conservation Yard. Geophysical Anomaly Feature - Conductivity, Magnetometer and Ground Penetrating Radar.	Primary and Secondary	Secondary suite added since location targets waste storage area.
Group 5	Drainage	211	Old Conservation Yard - South central portion.	Historical photograph of Old Conservation Yard. Geophysical Anomaly Feature - Conductivity. Potential radiological contamination associated with the transfer pipeline from the SRE Pond.	Primary	<b>If sample location in the field is within the drainage, then DO NOT COLLECT SAMPLE; otherwise collect sample.</b>
Group 5	Subsurface	211	Old Conservation Yard - South central portion.	Historical photograph of Old Conservation Yard. Geophysical Anomaly Feature - Conductivity. Potential radiological contamination associated with the transfer pipeline from the SRE Pond.	Primary	<b>If sample location in the field is within the drainage, then DO NOT COLLECT SAMPLE; otherwise collect sample.</b>
<del>Group 4</del>	<del>Subsurface</del>	<del>212</del>	<del>New Conservation Yard - Northwest portion.</del>	<del>Downgradient from PGRAY 43. Boundary of Chemical Likely Remediation Zone.</del>	<del>Deselect</del>	<del>Sample location in identified chemical contamination area.</del>
<del>Group 4</del>	<del>Surface</del>	<del>212</del>	<del>New Conservation Yard - Northwest portion.</del>	<del>Downgradient from PGRAY 43. Boundary of Chemical Likely Remediation Zone.</del>	<del>Deselect</del>	<del>Sample location in identified chemical contamination area.</del>
Group 4	Subsurface	213	New Conservation Yard - Northwest portion.	Downgradient from PGRAY 47. Boundary of Chemical Likely Remediation Zone.	Primary and Secondary	Secondary suite added since location targets waste storage area.
Group 4	Surface	213	New Conservation Yard - Northwest portion.	Downgradient from PGRAY 47. Boundary of Chemical Likely Remediation Zone.	Primary and Secondary	Secondary suite added since location targets waste storage area.
Group 5	Subsurface	214	Old Conservation Yard - South central portion.	Historical photograph of the OCY. Location of former transfer pipeline from the SRE Pond.	Primary	
Group 4	Subsurface	215	New Conservation Yard - Northwest portion.	Downgradient from PGRAY 43. Slightly elevated gamma scanning survey readings. Boundary of Chemical Likely Remediation Zone.	Primary and Secondary	Secondary suite added at representative locations along drainage based on previous chemical data in area.
Group 4	Surface	215	New Conservation Yard - Northwest portion.	Downgradient from PGRAY 43. Slightly elevated gamma scanning survey readings. Boundary of Chemical Likely Remediation Zone.	Primary and Secondary	Secondary suite added at representative locations along drainage based on previous chemical data in area.
Group 4	Subsurface	216	New Conservation Yard - Northwest portion.	Aerial Photo Feature - Open Storage.	Primary, alcohols, glycols, terphenyls, TPH	Alcohols, glycols, terphenyls, and TPH added due to operational use.
Group 4	Surface	216	New Conservation Yard - Northwest portion.	Aerial Photo Feature - Open Storage.	Primary, alcohols, glycols, terphenyls, TPH	Alcohols, glycols, terphenyls, and TPH added due to operational use.
Group 5	Subsurface	217	Old Conservation Yard - South central portion.	Aerial Photo Feature - Open Storage. Historical photograph. Geophysical Anomaly Feature - Conductivity.	Primary and Secondary	Secondary suite added since location targets waste storage area.
Group 4	Subsurface	218	New Conservation Yard - Northwest portion.	Potential radiological contamination originating from an underground storage tank associated with former Decontamination Trailer.	Primary	
Group 4	Surface	218	New Conservation Yard - Northwest portion.	Potential radiological contamination originating from an underground storage tank associated with former Decontamination Trailer.	Primary	
Group 4	Subsurface	219	New Conservation Yard - Northwest portion.	Aerial Photo Feature - Open Storage.	Primary, alcohols, glycols, terphenyls, TPH	Alcohols, glycols, terphenyls, and TPH added due to operational use.
Group 4	Surface	219	New Conservation Yard - Northwest portion.	Aerial Photo Feature - Open Storage.	Primary, alcohols, glycols, terphenyls, TPH	Alcohols, glycols, terphenyls, and TPH added due to operational use.

Table 1  
Summary of Soil Sample Locations in Subarea 6

Group	Sample Type	Location ID	Location Description	Technical Justification	Co-located Chemical Analytes	Co-located Chemical Sample Rationale
Group 4	Subsurface	220	New Conservation Yard - Northwest portion.	Aerial Photo Feature -Storage Tank. Close proximity to PGRAY 47.	Primary	
Group 4	Surface	220	New Conservation Yard - Northwest portion.	Aerial Photo Feature -Storage Tank. Close proximity to PGRAY 47.	Primary	
Group 4	Subsurface	221	New Conservation Yard - Central portion.	Aerial Photo Feature - Open Storage.	Primary, alcohols, glycols, terphenyls, TPH	Alcohols, glycols, terphenyls, and TPH added due to operational use.
Group 4	Subsurface	222	New Conservation Yard - Central portion.	Aerial Photo Feature - Open Storage.	Deselect	Existing chemical data in the area.
Group 4	Subsurface	223	New Conservation Yard - Central portion.	Aerial Photo Feature - Open Storage. Geophysical Anomaly Feature - GPR. Boundary of Chemical Likely Remediation Zone.	Primary, alcohols, glycols, terphenyls, TPH	Alcohols, glycols, terphenyls, and TPH added due to operational use.
Group 4	Subsurface	224	New Conservation Yard - Central portion.	Aerial Photo Feature - Open Storage.	Primary, alcohols, glycols, terphenyls, TPH	Alcohols, glycols, terphenyls, and TPH added due to operational use.
Group 4	Subsurface	225	New Conservation Yard - Central portion.	Aerial Photo Feature - Open Storage. Boundary of Chemical Likely Remediation Zone.	Primary, alcohols, glycols, terphenyls, TPH	Alcohols, glycols, terphenyls, and TPH added due to operational use.
Group 4	Subsurface	226	New Conservation Yard - Central portion.	Aerial Photo Feature - Open Storage. Boundary of Chemical Likely Remediation Zone.	Primary, alcohols, glycols, terphenyls, TPH	Alcohols, glycols, terphenyls, and TPH added due to operational use.
Group 4	Subsurface	227	Contaminated Medical/Storage Facility.	Potential radiological contamination resulting from the storage of radioactive sources. Aerial Photo Feature - Open Storage.	Deselect	Existing chemical data in the area.
Group 4	Surface	227	Contaminated Medical/Storage Facility.	Potential radiological contamination resulting from the storage of radioactive sources. Aerial Photo Feature - Open Storage.	Deselect	Existing chemical data in the area.
Group 4	Subsurface	228	New Conservation Yard - Central portion.	Boundary of Chemical Likely Remediation Zone.	Primary and Secondary	Secondary suite added at representative locations along drainage based on previous chemical data in area.
Group 4	Surface	228	New Conservation Yard - Central portion.	Boundary of Chemical Likely Remediation Zone.	Primary and Secondary	Secondary suite added at representative locations along drainage based on previous chemical data in area.
Group 4	Drainage	229	New Conservation Yard - Southeast portion.	Potential radiological contamination within drainage that originated in the OCY and received water from transfer pipeline that carried water from the SRE Pond.	Primary	Sample location targets drainage from waste storage area; select locations are Primary only due to sampling density.
Group 4	Subsurface	229	New Conservation Yard - Southeast portion.	Potential radiological contamination within drainage that originated in the OCY and received water from transfer pipeline that carried water from the SRE Pond.	Primary	Sample location targets drainage from waste storage area; select locations are Primary only due to sampling density.
Group 4	Drainage	230	New Conservation Yard - Southeast portion.	Potential radiological contamination within drainage that originated in the OCY and received water from transfer pipeline that carried water from the SRE Pond.	Primary and Secondary	Secondary suite added since location targets waste storage area.
Group 4	Subsurface	230	New Conservation Yard - Southeast portion.	Potential radiological contamination within drainage that originated in the OCY and received water from transfer pipeline that carried water from the SRE Pond.	Primary and Secondary	Secondary suite added since location targets waste storage area.
Group 4	Drainage	231	New Conservation Yard - East portion.	Potential radiological contamination within drainage that originated in the OCY.	Deselect	Existing chemical data in the area.
Group 4	Subsurface	231	New Conservation Yard - East portion.	Potential radiological contamination within drainage that originated in the OCY.	Deselect	Existing chemical data in the area.
Group 4	Drainage	232	New Conservation Yard - East portion.	Potential radiological contamination within drainage that originated in the OCY and received water from transfer pipeline that carried water from the SRE Pond.	Primary	
Group 4	Subsurface	232	New Conservation Yard - East portion.	Potential radiological contamination within drainage that originated in the OCY and received water from transfer pipeline that carried water from the SRE Pond.	Primary	
Group 4	Subsurface	233	New Conservation Yard - South portion.	Potential radiological contamination from surface water run-off from the New Conservation Yard.	Primary and Secondary	Secondary suite added at representative locations along drainage based on previous chemical data in area.
Group 4	Surface	233	New Conservation Yard - South portion.	Potential radiological contamination from surface water run-off from the New Conservation Yard.	Primary and Secondary	Secondary suite added at representative locations along drainage based on previous chemical data in area.
Group 4	Subsurface	234	New Conservation Yard - South portion.	Potential radiological contamination from surface water run-off from the New Conservation Yard.	Primary	
Group 4	Surface	234	New Conservation Yard - South portion.	Potential radiological contamination from surface water run-off from the New Conservation Yard.	Primary	
Group 4	Subsurface	235	New Conservation Yard - South portion.	Potential radiological contamination from surface water run-off from the New Conservation Yard.	Primary	
Group 4	Surface	235	New Conservation Yard - South portion.	Potential radiological contamination from surface water run-off from the New Conservation Yard.	Primary	
Group 4	Subsurface	236	New Conservation Yard - South portion.	Potential radiological contamination from surface water run-off from the New Conservation Yard.	Primary	
Group 4	Surface	236	New Conservation Yard - South portion.	Potential radiological contamination from surface water run-off from the New Conservation Yard.	Primary	
Group 4	Subsurface	237	New Conservation Yard - Central portion.	Close proximity to PGRAY 49. Boundary of Chemical Likely Remediation Zone.	Primary	
Group 4	Surface	237	New Conservation Yard - Central portion.	Close proximity to PGRAY 49. Boundary of Chemical Likely Remediation Zone.	Primary	
Group 4	Subsurface	238	New Conservation Yard - Central portion.	Close proximity to PGRAY 56 and 58. Boundary of Chemical Likely Remediation Zone.	Primary	
Group 4	Surface	238	New Conservation Yard - Central portion.	Close proximity to PGRAY 56 and 58. Boundary of Chemical Likely Remediation Zone.	Primary	
Group 4	Subsurface	239	New Conservation Yard - Northwest portion.	Potential radiological contamination originating from an underground storage tank associated with a former Decontamination Trailer.	Deselect	High density of rad sampling, existing chemical data in area.
Group 4	Surface	239	New Conservation Yard - Northwest portion.	Potential radiological contamination originating from an underground storage tank associated with a former Decontamination Trailer.	Deselect	High density of rad sampling, existing chemical data in area.
Group 4	Subsurface	240	New Conservation Yard - Central portion.	Close proximity to PGRAY 52 and 56. Boundary of Chemical Likely Remediation Zone.	Primary and Secondary	Secondary suite added at representative locations along drainage based on previous chemical data in area.
Group 4	Surface	240	New Conservation Yard - Central portion.	Close proximity to PGRAY 52 and 56. Boundary of Chemical Likely Remediation Zone.	Primary and Secondary	Secondary suite added at representative locations along drainage based on previous chemical data in area.

Table 1  
Summary of Soil Sample Locations in Subarea 6

Group	Sample Type	Location ID	Location Description	Technical Justification	Co-located Chemical Analytes	Co-located Chemical Sample Rationale
Group 4	Subsurface	241	Contaminated Medical/Storage Facility.	Potential radiological contamination resulting from the storage of radioactive sources.	Primary	
Group 4	Surface	241	Contaminated Medical/Storage Facility.	Potential radiological contamination resulting from the storage of radioactive sources.	Primary	
Group 4	Subsurface	242	Contaminated Medical/Storage Facility.	Potential radiological contamination resulting from the storage of radioactive sources.	Primary	
Group 4	Surface	242	Contaminated Medical/Storage Facility.	Potential radiological contamination resulting from the storage of radioactive sources.	Primary	
Group 4	Subsurface	243	Contaminated Medical/Storage Facility.	Potential radiological contamination resulting from the storage of radioactive sources.	Primary	Future additional data needed to delineate identified chemical contamination area at ash pile.
Group 4	Surface	243	Contaminated Medical/Storage Facility.	Potential radiological contamination resulting from the storage of radioactive sources.	Primary	Future additional data needed to delineate identified chemical contamination area at ash pile.
Group 4	Subsurface	244	Contaminated Medical/Storage Facility.	Potential radiological contamination resulting from the storage of radioactive sources.	Primary	
Group 4	Surface	244	Contaminated Medical/Storage Facility.	Potential radiological contamination resulting from the storage of radioactive sources.	Primary	
Group 5	Subsurface	245	Old Conservation Yard - North central portion.	Historical photograph. Aerial Photo Feature - Open Storage.	Primary and Secondary	Secondary suite added since location targets waste storage area.
Group 5	Surface	245	Old Conservation Yard - North central portion.	Historical photograph. Aerial Photo Feature - Open Storage.	Primary and Secondary	Secondary suite added since location targets waste storage area.
Group 5	Subsurface	246	Old Conservation Yard - North central portion.	Historical photograph. Aerial Photo Feature - Open Storage. Historical data show slightly elevated concentration of U-235.	Primary and Secondary	Secondary suite added since location targets waste storage area.
Group 5	Subsurface	247	Old Conservation Yard - North central portion.	Historical photograph. Aerial Photo Feature - Open Storage. Geophysical Anomaly Feature - Magnetometer.	Primary and Secondary	Secondary suite added since location targets waste storage area.
Group 5	Subsurface	248	Old Conservation Yard - North central portion.	Historical photograph. Aerial Photo Feature - Open Storage. Geophysical Anomaly Feature - Magnetometer.	Deselect	High density of rad sampling in area.
Group 5	Subsurface	249	Old Conservation Yard - North central portion.	Historical photograph.	Primary and Secondary	Secondary suite added since location targets waste storage area.
Group 5	Subsurface	250	Old Conservation Yard - North central portion.	Historical photograph.	Primary and Secondary	Secondary suite added since location targets waste storage area.
Group 5	Subsurface	251	Old Conservation Yard - North central portion.	Historical photograph of Old Conservation Yard. Aerial Photo Feature - Open Storage. Geophysical Anomaly Feature - Magnetometer.	Deselect	High density of rad sampling in area.
Group 5	Subsurface	252	Old Conservation Yard - North central portion.	Historical photograph of Old Conservation Yard. Aerial Photo Feature - Open Storage. Geophysical Anomaly Feature - Magnetometer.	Primary and Secondary	Secondary suite added since location targets waste storage area.
Group 5	Subsurface	253	Old Conservation Yard - North central portion.	Historical photograph of Old Conservation Yard. Slightly elevated gamma scanning survey readings.	Primary and Secondary	Secondary suite added since location targets waste storage area.
Group 5	Surface	253	Old Conservation Yard - North central portion.	Historical photograph of Old Conservation Yard. Slightly elevated gamma scanning survey readings.	Primary and Secondary	Secondary suite added since location targets waste storage area.
Group 5	Subsurface	254	Old Conservation Yard - North central portion.	Historical photograph of Old Conservation Yard. Slightly elevated gamma scanning survey readings.	Primary and Secondary	Secondary suite added since location targets waste storage area.
Group 5	Surface	254	Old Conservation Yard - North central portion.	Historical photograph of Old Conservation Yard. Slightly elevated gamma scanning survey readings.	Primary and Secondary	Secondary suite added since location targets waste storage area.
Group 5	Subsurface	255	Old Conservation Yard - North central portion.	Historical photograph of Old Conservation Yard. Aerial Photo Feature - Open Storage. Slightly elevated gamma scanning survey readings.	Primary and Secondary	Secondary suite added since location targets waste storage area.
Group 5	Surface	255	Old Conservation Yard - North central portion.	Historical photograph of Old Conservation Yard. Aerial Photo Feature - Open Storage. Slightly elevated gamma scanning survey readings.	Primary and Secondary	Secondary suite added since location targets waste storage area.
Group 5	Subsurface	256	Old Conservation Yard - North central portion.	Historical photograph of Old Conservation Yard. Aerial Photo Feature - Open Storage. Slightly elevated gamma scanning survey readings.	Primary and Secondary	Secondary suite added since location targets waste storage area.
Group 5	Surface	256	Old Conservation Yard - North central portion.	Historical photograph of Old Conservation Yard. Aerial Photo Feature - Open Storage. Slightly elevated gamma scanning survey readings.	Primary and Secondary	Secondary suite added since location targets waste storage area.
Group 5	Subsurface	257	Old Conservation Yard - North central portion.	Historical photograph of Old Conservation Yard. Aerial Photo Feature - Open Storage.	Primary and Secondary	Secondary suite added since location targets waste storage area.
Group 5	Subsurface	258	Old Conservation Yard - Southeast portion.	Historical photograph of Old Conservation Yard. Aerial Photo Feature - Open Storage.	Primary and Secondary	Secondary suite added since location targets waste storage area.
Group 5	Subsurface	259	Old Conservation Yard - Southeast portion.	Historical photograph of Old Conservation Yard. Aerial Photo Feature - Open Storage. Geophysical Feature - Magnetometer.	Deselect	High density of rad sampling in area; need future additional data to address elevated reporting limits in existing chemical data.
Group 5	Subsurface	260	Old Conservation Yard - Southeast portion.	Historical photograph of Old Conservation Yard. Aerial Photo Feature - Open Storage.	Deselect	High density of rad sampling, existing chemical data in area; need future additional data to address elevated reporting limits in existing chemical data.
Group 5	Subsurface	261	Old Conservation Yard - Southeast portion.	Historical photograph of Old Conservation Yard. Aerial Photo Feature - Open Storage. Geophysical Feature - Ground Penetrating Radar.	Primary and Secondary	Secondary suite added since location targets waste storage area.
Group 5	Subsurface	262	Old Conservation Yard - South portion.	Historical photograph of Old Conservation Yard. Aerial Photo Features - Open Storage and Storage Tank.	Primary and Secondary	Secondary suite added since location targets waste storage area.
Group 5	Subsurface	263	Old Conservation Yard - Southeast portion.	Historical photograph of Old Conservation Yard. Aerial Photo Feature - Open Storage. Geophysical Feature - Conductivity.	Primary and Secondary	Secondary suite added since location targets waste storage area.
Group 5	Subsurface	264	Old Conservation Yard - Southeast portion.	Historical photograph of Old Conservation Yard. Aerial Photo Feature - Open Storage. Geophysical Feature - Magnetometer.	Primary and Secondary	Secondary suite added since location targets waste storage area.
Group 5	Subsurface	265	Old Conservation Yard - South portion.	Historical photograph of Old Conservation Yard. Aerial Photo Features - Open Storage and Storage Tank.	Primary and Secondary	Secondary suite added since location targets waste storage area.
Group 5	Subsurface	266	Old Conservation Yard - South portion.	Historical photograph of Old Conservation Yard. Aerial Photo Feature - Open Storage. Geophysical Feature - Magnetometer.	Primary and Secondary	Secondary suite added since location targets waste storage area.
Group 5	Subsurface	267	Old Conservation Yard - Northwest portion.	Historical photograph of Old Conservation Yard.	Primary and Secondary	Secondary suite added since location targets waste storage area.
Group 5	Drainage	268	Old Conservation Yard - North central portion.	Potential contamination from surface water run-off from the Old Conservation Yard. Historical data elevated concentration of U-235.	Primary and Secondary	Secondary suite added since location targets waste storage area.
Group 5	Subsurface	268	Old Conservation Yard - North central portion.	Potential contamination from surface water run-off from the Old Conservation Yard. Historical data elevated concentration of U-235.	Primary and Secondary	Secondary suite added since location targets waste storage area.
Group 5	Subsurface	269	Northeast corner of the Old Conservation Yard.	Historical photograph of Old Conservation Yard.	Primary and Secondary	Secondary suite added since location targets waste storage area.
Group 5	Subsurface	270	Old Conservation Yard - West central portion.	Former location of bermed soil.	Primary and Secondary	Secondary suite added since location targets waste storage area.



Table 1  
Summary of Soil Sample Locations in Subarea 6

Group	Sample Type	Location ID	Location Description	Technical Justification	Co-located Chemical Analytes	Co-located Chemical Sample Rationale
Group 5-	Subsurface-	271-	Old Conservation Yard - East portion. ---	Aerial Photo Feature - Debris Piles. ---	Deselect	Sample location in identified chemical contamination area.
Group 1-	Subsurface-	272-	SRE Tarp - South boundary. ---	Boundary of the SRE Tarp. ---	Deselect	Existing chemical data in the area.
Group 1	Subsurface	273	SRE Tarp - South boundary.	Boundary of the SRE Tarp.	Primary, alcohols, glycols, terphenyls, TPH	Alcohols, glycols, terphenyls, and TPH added due to operational use.
Group 1-	Subsurface-	274-	SRE Tarp - South boundary. ---	Boundary of the SRE Tarp. ---	Deselect	High density of rad sampling in area.
Group 1	Subsurface	275	SRE Tarp - West boundary.	Boundary of the SRE Tarp.	Primary, alcohols, glycols, terphenyls, TPH	Alcohols, glycols, terphenyls, and TPH added due to operational use.
Group 1	Subsurface	276	SRE Tarp - West boundary.	Boundary of the SRE Tarp.	Primary, alcohols, glycols, terphenyls, TPH, formaldehyde, NDMA	Alcohols, glycols, terphenyls, and TPH added due to operational use. Formaldehyde and NDMA added since small cooling tower in area.
Group 1	Subsurface	277	SRE Tarp - West boundary.	Boundary of the SRE Tarp.	Primary, alcohols, glycols, terphenyls, TPH	Alcohols, glycols, terphenyls, and TPH added due to operational use.
Group 1	Subsurface	278	SRE Tarp - North boundary.	Boundary of the SRE Tarp.	Primary, alcohols, glycols, terphenyls, TPH	Alcohols, glycols, terphenyls, and TPH added due to operational use.
Group 1	Surface	278	SRE Tarp - North boundary.	Boundary of the SRE Tarp.	Primary, alcohols, glycols, terphenyls, TPH	Alcohols, glycols, terphenyls, and TPH added due to operational use.
Group 1	Subsurface	279	SRE Tarp - North boundary.	Boundary of the SRE Tarp. Boundary of Chemical Likely Remediation Zone.	Primary, alcohols, glycols, terphenyls, TPH	Alcohols, glycols, terphenyls, and TPH added due to operational use.
Group 1	Surface	279	SRE Tarp - North boundary.	Boundary of the SRE Tarp. Boundary of Chemical Likely Remediation Zone.	Primary, alcohols, glycols, terphenyls, TPH	Alcohols, glycols, terphenyls, and TPH added due to operational use.
Group 1	Subsurface	280	SRE Tarp - North boundary.	Boundary of the SRE Tarp. Aerial Photo Feature - Light Toned Mounded Material. Geophysical Anomaly - Magnetometer.	Primary, alcohols, glycols, terphenyls, TPH, formaldehyde, NDMA	Formaldehyde and NDMA added due to cooling tower operations; SRE suite for all SRE operational areas.
Group 1	Surface	280	SRE Tarp - North boundary.	Boundary of the SRE Tarp. Aerial Photo Feature - Light Toned Mounded Material. Geophysical Anomaly - Magnetometer.	Primary, alcohols, glycols, terphenyls, TPH, formaldehyde, NDMA	Formaldehyde and NDMA added due to cooling tower operations; SRE suite for all SRE operational areas.
Group 1	Subsurface	281	SRE Tarp - North boundary.	Boundary of the SRE Tarp. Aerial Photo Feature - Light Toned Mounded Material. Location of the former cooling tower.	Primary, alcohols, glycols, terphenyls, TPH, formaldehyde, NDMA	Formaldehyde and NDMA added due to cooling tower operations; SRE suite for all SRE operational areas.
Group 1	Surface	281	SRE Tarp - North boundary.	Boundary of the SRE Tarp. Aerial Photo Feature - Light Toned Mounded Material. Location of the former cooling tower.	Primary, alcohols, glycols, terphenyls, TPH, formaldehyde, NDMA	Formaldehyde and NDMA added due to cooling tower operations; SRE suite for all SRE operational areas.
Group 1	Subsurface	282	SRE Tarp - West portion.	Potential radiological contamination from activities associated with the SRE Complex.	Primary, alcohols, glycols, terphenyls, TPH	Sample location in waste disposal area; refined secondary suite due to existing chemical data. Alcohols, glycols, terphenyls, and TPH added due to operational use.
Group 1	Surface	282	SRE Tarp - West portion.	Potential radiological contamination from activities associated with the SRE Complex.	Primary, alcohols, glycols, terphenyls, TPH	Sample location in waste disposal area; refined secondary suite due to existing chemical data. Alcohols, glycols, terphenyls, and TPH added due to operational use.
Group 1	Subsurface	283	SRE Tarp - West portion.	Potential radiological contamination from activities associated with the SRE Complex.	Primary, alcohols, glycols, terphenyls, TPH	Sample location in waste disposal area; refined secondary suite due to existing chemical data. Alcohols, glycols, terphenyls, and TPH added due to operational use.
Group 1	Surface	283	SRE Tarp - West portion.	Potential radiological contamination from activities associated with the SRE Complex.	Primary, alcohols, glycols, terphenyls, TPH	Sample location in waste disposal area; refined secondary suite due to existing chemical data. Alcohols, glycols, terphenyls, and TPH added due to operational use.
Group 1	Subsurface	284	SRE Tarp - South portion.	Potential radiological contamination from activities associated with the SRE Complex.	Primary, alcohols, glycols, terphenyls, TPH	Alcohols, glycols, terphenyls, and TPH added due to operational use.
Group 1	Surface	284	SRE Tarp - South portion.	Potential radiological contamination from activities associated with the SRE Complex.	Primary, alcohols, glycols, terphenyls, TPH	Alcohols, glycols, terphenyls, and TPH added due to operational use.
Group 1	Subsurface	285	SRE Tarp - South portion.	Potential radiological contamination from activities associated with the SRE Complex.	Primary, alcohols, glycols, terphenyls, TPH	Alcohols, glycols, terphenyls, and TPH added due to operational use.
Group 1	Surface	285	SRE Tarp - South portion.	Potential radiological contamination from activities associated with the SRE Complex.	Primary, alcohols, glycols, terphenyls, TPH	Alcohols, glycols, terphenyls, and TPH added due to operational use.
Group 1	Subsurface	286	SRE Area - Western portion.	PGRAY 1.	Primary, alcohols, glycols, terphenyls, TPH	Alcohols, glycols, terphenyls, and TPH added due to operational use/ liquid waste storage.
Group 1	Surface	286	SRE Area - Western portion.	PGRAY 1.	Primary, alcohols, glycols, terphenyls, TPH	Alcohols, glycols, terphenyls, and TPH added due to operational use/ liquid waste storage.
Group 1-	Subsurface-	287-	SRE Area - Western portion. ---	PGRAY 2-	Deselect	High density of rad sampling in area.
Group 1-	Surface-	287-	SRE Area - Western portion. ---	PGRAY 2-	Deselect	High density of rad sampling in area.
Group 1-	Subsurface-	288-	SRE Area - Western portion, within the footprint of former Site 4689-. ---	PGRAY 3-	Deselect	High density of rad sampling in area.
Group 1-	Surface-	288-	SRE Area - Western portion, within the footprint of former Site 4689-. ---	PGRAY 3-	Deselect	High density of rad sampling in area.
Group 1	Subsurface	289	SRE Area - Western portion.	PGRAY 3.	Primary, alcohols, glycols, terphenyls, TPH	Alcohols, glycols, terphenyls, and TPH added due to operational use/ liquid waste storage.
Group 1	Surface	289	SRE Area - Western portion.	PGRAY 3.	Primary, alcohols, glycols, terphenyls, TPH	Alcohols, glycols, terphenyls, and TPH added due to operational use/ liquid waste storage.
Group 1-	Subsurface-	290-	SRE Area - Northwestern portion. ---	PGRAY 4-	Deselect	High density of rad sampling in area.
Group 1-	Surface-	290-	SRE Area - Northwestern portion. ---	PGRAY 4-	Deselect	High density of rad sampling in area.
Group 1	Subsurface	291	SRE Area - Northwestern portion.	PGRAY 4.	Primary, alcohols, glycols, terphenyls, TPH	Alcohols, glycols, terphenyls, and TPH added due to operational use.
Group 1	Surface	291	SRE Area - Northwestern portion.	PGRAY 4.	Primary, alcohols, glycols, terphenyls, TPH	Alcohols, glycols, terphenyls, and TPH added due to operational use.
Group 1	Subsurface	292	SRE Area - Northwestern portion.	PGRAY 4.	Primary, alcohols, glycols, terphenyls, TPH	Alcohols, glycols, terphenyls, and TPH added due to operational use.
Group 1	Surface	292	SRE Area - Northwestern portion.	PGRAY 4.	Primary, alcohols, glycols, terphenyls, TPH	Alcohols, glycols, terphenyls, and TPH added due to operational use.
Group 1	Subsurface	293	Liquid and Gas Radioactive Storage Tanks Area.	PGRAY 5.	Primary, alcohols, glycols, terphenyls, TPH	Alcohols, glycols, terphenyls, and TPH added due to operational use.
Group 1	Surface	293	Liquid and Gas Radioactive Storage Tanks Area.	PGRAY 5.	Primary, alcohols, glycols, terphenyls, TPH	Alcohols, glycols, terphenyls, and TPH added due to operational use.
Group 1-	Subsurface-	294-	Liquid and Gas Radioactive Storage Tanks Area. ---	PGRAY 8-	Deselect	High density of rad sampling in area.
Group 1-	Surface-	294-	Liquid and Gas Radioactive Storage Tanks Area. ---	PGRAY 8-	Deselect	High density of rad sampling in area.
Group 1-	Subsurface-	295-	SRE Area - Northwestern portion. ---	PGRAY 9-	Deselect	Sample location in identified chemical contamination area.
Group 1-	Surface-	295-	SRE Area - Northwestern portion. ---	PGRAY 9-	Deselect	Sample location in identified chemical contamination area.
Group 1-	Subsurface-	296-	SRE Area - Northwestern portion. ---	PGRAY 9-	Deselect	Sample location in identified chemical contamination area.
Group 1-	Surface-	296-	SRE Area - Northwestern portion. ---	PGRAY 9-	Deselect	Sample location in identified chemical contamination area.
Group 1	Subsurface	297	SRE Area - Northwestern portion.	PGRAY 9.	Primary, alcohols, glycols, terphenyls, TPH	Alcohols, glycols, terphenyls, and TPH added due to operational use.
Group 1	Surface	297	SRE Area - Northwestern portion.	PGRAY 9.	Primary, alcohols, glycols, terphenyls, TPH	Alcohols, glycols, terphenyls, and TPH added due to operational use.
Group 1	Subsurface	298	SRE Area - Northwestern portion.	PGRAY 9.	Primary, alcohols, glycols, terphenyls, TPH	Alcohols, glycols, terphenyls, and TPH added due to operational use.
Group 1	Surface	298	SRE Area - Northwestern portion.	PGRAY 9.	Primary, alcohols, glycols, terphenyls, TPH	Alcohols, glycols, terphenyls, and TPH added due to operational use.
Group 1-	Subsurface-	299-	SRE Area - Southern portion. ---	PGRAY 12-	Deselect	High density of rad sampling in area.
Group 1-	Surface-	299-	SRE Area - Southern portion. ---	PGRAY 12-	Deselect	High density of rad sampling in area.

Table 1  
Summary of Soil Sample Locations in Subarea 6

Group	Sample Type	Location ID	Location Description	Technical Justification	Co-located Chemical Analytes	Co-located Chemical Sample Rationale
Group 1	Subsurface	300	SRE Area - Northeastern portion.	PGRAY 19.	Primary, alcohols, glycols, terphenyls, TPH, formaldehyde, NDMA	Formaldehyde and NDMA added due to cooling tower operations; SRE suite for all SRE operational areas.
Group 1	Surface	300	SRE Area - Northeastern portion.	PGRAY 19.	Primary, alcohols, glycols, terphenyls, TPH, formaldehyde, NDMA	Formaldehyde and NDMA added due to cooling tower operations; SRE suite for all SRE operational areas.
Group 2	Subsurface	301	Contaminated Laundry Building.	PGRAY 21.	Primary	
Group 2	Surface	301	Contaminated Laundry Building.	PGRAY 21.	Primary	
Group 1	Subsurface	302	Hot Oil Sodium Cleaning Facility.	PGRAY 26.	Primary, alcohols, glycols, TPH	Alcohols and glycols added due to operational use in area. TPH added since sample location targets oil tank.
Group 1	Surface	302	Hot Oil Sodium Cleaning Facility.	PGRAY 26.	Primary, alcohols, glycols, TPH	Alcohols and glycols added due to operational use in area. TPH added since sample location targets oil tank.
Group 1	Subsurface	303	Steam Sodium Cleaning Pad.	PGRAY 28.	Primary, alcohols, glycols, terphenyls, TPH	Alcohols, glycols, terphenyls, and TPH added due to operational use.
Group 1	Surface	303	Steam Sodium Cleaning Pad.	PGRAY 28.	Primary, alcohols, glycols, terphenyls, TPH	Alcohols, glycols, terphenyls, and TPH added due to operational use.
Group 1	Subsurface	304	Steam Sodium Cleaning Pad	PGRAY 29.	Primary, alcohols, glycols, terphenyls, TPH	Alcohols, glycols, terphenyls, and TPH added due to operational use.
Group 1	Surface	304	Steam Sodium Cleaning Pad	PGRAY 29.	Primary, alcohols, glycols, terphenyls, TPH	Alcohols, glycols, terphenyls, and TPH added due to operational use.
Group 3	Subsurface	305	Fuel Storage Facility.	PGRAY 36.	Primary, alcohols, glycols, terphenyls, TPH	Alcohols, glycols, terphenyls, and TPH added due to operational use.
Group 3	Surface	305	Fuel Storage Facility.	PGRAY 36.	Primary, alcohols, glycols, terphenyls, TPH	Alcohols, glycols, terphenyls, and TPH added due to operational use.
Group 4	Subsurface	306	East of the Fuel Storage Facility, south of the Contaminated Medical/Storage Facility.	PGRAY 37.	Primary	
Group 4	Surface	306	East of the Fuel Storage Facility, south of the Contaminated Medical/Storage Facility.	PGRAY 37.	Primary	
Group 4	Subsurface	307	East of the Fuel Storage Facility.	PGRAY 38.	Primary	
Group 4	Surface	307	East of the Fuel Storage Facility.	PGRAY 38.	Primary	
Group 4	Subsurface	308	East of the Fuel Storage Facility.	PGRAY 39.	Primary	
Group 4	Surface	308	East of the Fuel Storage Facility.	PGRAY 39.	Primary	
Group 4	Subsurface	309	Contaminated Medical/Storage Facility.	PGRAY 40.	Primary	
Group 4	Surface	309	Contaminated Medical/Storage Facility.	PGRAY 40.	Primary	
Group 4	Subsurface	310	New Conservation Yard.	PGRAY 43.	Primary	
Group 4	Surface	310	New Conservation Yard.	PGRAY 43.	Primary	
Group 5	Subsurface	311	Old Conservation Yard - East portion.	PGRAY 45.	Primary and Secondary	Secondary suite added since location targets waste storage area.
Group 5	Surface	311	Old Conservation Yard - East portion.	PGRAY 45.	Primary and Secondary	Secondary suite added since location targets waste storage area.
Group 5-	Subsurface-	312	Old Conservation Yard - East portion. ---	PGRAY 46-	Deselect	Existing chemical data in the area; need future additional metals data to delineate extent of impacts.
Group 5-	Surface-	312	Old Conservation Yard - East portion. ---	PGRAY 46-	Deselect	Existing chemical data in the area; need additional metals data to delineate extent of impacts.
Group 4-	Subsurface-	313	New Conservation Yard. ---	PGRAY 47-	Deselect	High density of rad sampling in area.
Group 4-	Surface-	313	New Conservation Yard. ---	PGRAY 47-	Deselect	High density of rad sampling in area.
Group 4	Subsurface	314	New Conservation Yard.	PGRAY 48.	Primary	
Group 4	Surface	314	New Conservation Yard.	PGRAY 48.	Primary	
Group 4	Subsurface	315	New Conservation Yard.	PGRAY 49.	Primary and Secondary	Secondary suite added at representative locations along drainage based on previous chemical data in area.
Group 4	Surface	315	New Conservation Yard.	PGRAY 49.	Primary and Secondary	Secondary suite added at representative locations along drainage based on previous chemical data in area.
Group 4	Subsurface	316	New Conservation Yard - Within drainage.	PGRAY 52.	Primary	
Group 4	Surface	316	New Conservation Yard - Within drainage.	PGRAY 52.	Primary	
Group 5	Subsurface	317	Old Conservation Yard - East portion, near the Edison Substation.	PGRAY 55.	Primary and Secondary	Secondary suite added since location targets waste storage area.
Group 5	Surface	317	Old Conservation Yard - East portion, near the Edison Substation.	PGRAY 55.	Primary and Secondary	Secondary suite added since location targets waste storage area.
Group 4	Subsurface	318	New Conservation Yard - Within drainage.	PGRAY 56.	Primary	
Group 4	Surface	318	New Conservation Yard - Within drainage.	PGRAY 56.	Primary	
Group 5	Subsurface	319	East portion of the Old Conservation Yard.	PGREY 57.	Primary and Secondary	Secondary suite added since location targets waste storage area.
Group 5	Surface	319	East portion of the Old Conservation Yard.	PGREY 57.	Primary and Secondary	Secondary suite added since location targets waste storage area.
Group 4-	Subsurface-	320	New Conservation Yard - Within drainage. ---	PGRAY 58-	Deselect	Sample location in identified chemical contamination area; existing chemical data in area.
Group 4-	Surface-	320	New Conservation Yard - Within drainage. ---	PGRAY 58-	Deselect	Sample location in identified chemical contamination area; existing chemical data in area.

Notes:

PCB - polychlorinated biphenyl  
PGRAY - potential gamma ray anomaly  
SRE - sodium reactor experiment  
TPH - total petroleum hydrocarbons