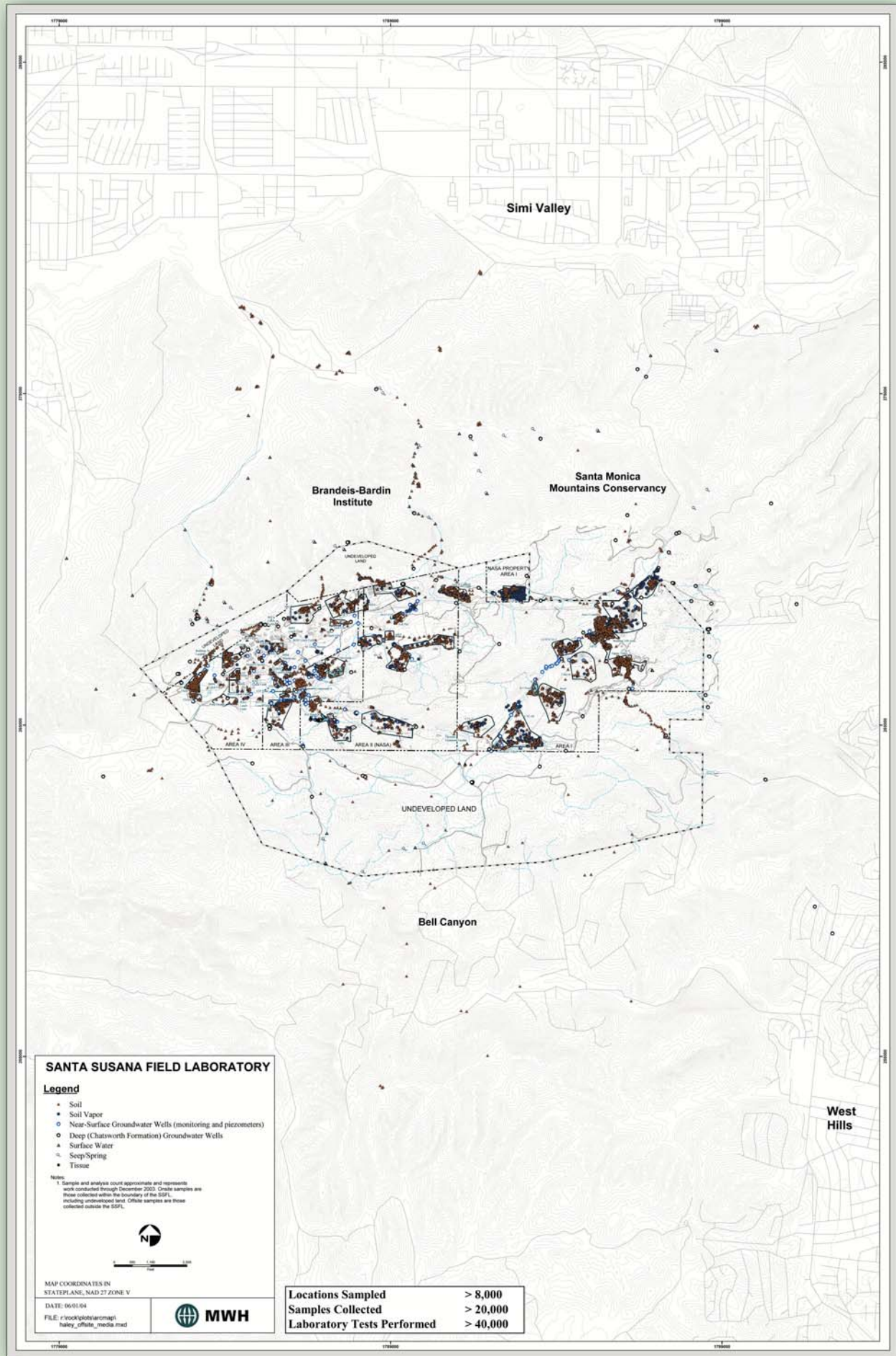


Where Have We Tested Soil and Groundwater?



SANTA SUSANA FIELD LABORATORY

Legend

- Soil
- Soil Vapor
- Near-Surface Groundwater Wells (monitoring and piezometers)
- Deep (Chatsworth Formation) Groundwater Wells
- ▲ Surface Water
- ▼ Seep/Spring
- ★ Tissue

Notes:
1. Sample and analysis count approximate and represents work conducted through December 2020. Circle samples are those collected within the boundary of the SSFL, including undeveloped land. Offsite samples are those collected outside the SSFL.



MAP COORDINATES IN STATEPLANE, NAD 27 ZONE V

DATE: 06/11/04
FILE: r:\rock\plots\arcmap\haley_offsite_media.mxd



Locations Sampled	> 8,000
Samples Collected	> 20,000
Laboratory Tests Performed	> 40,000