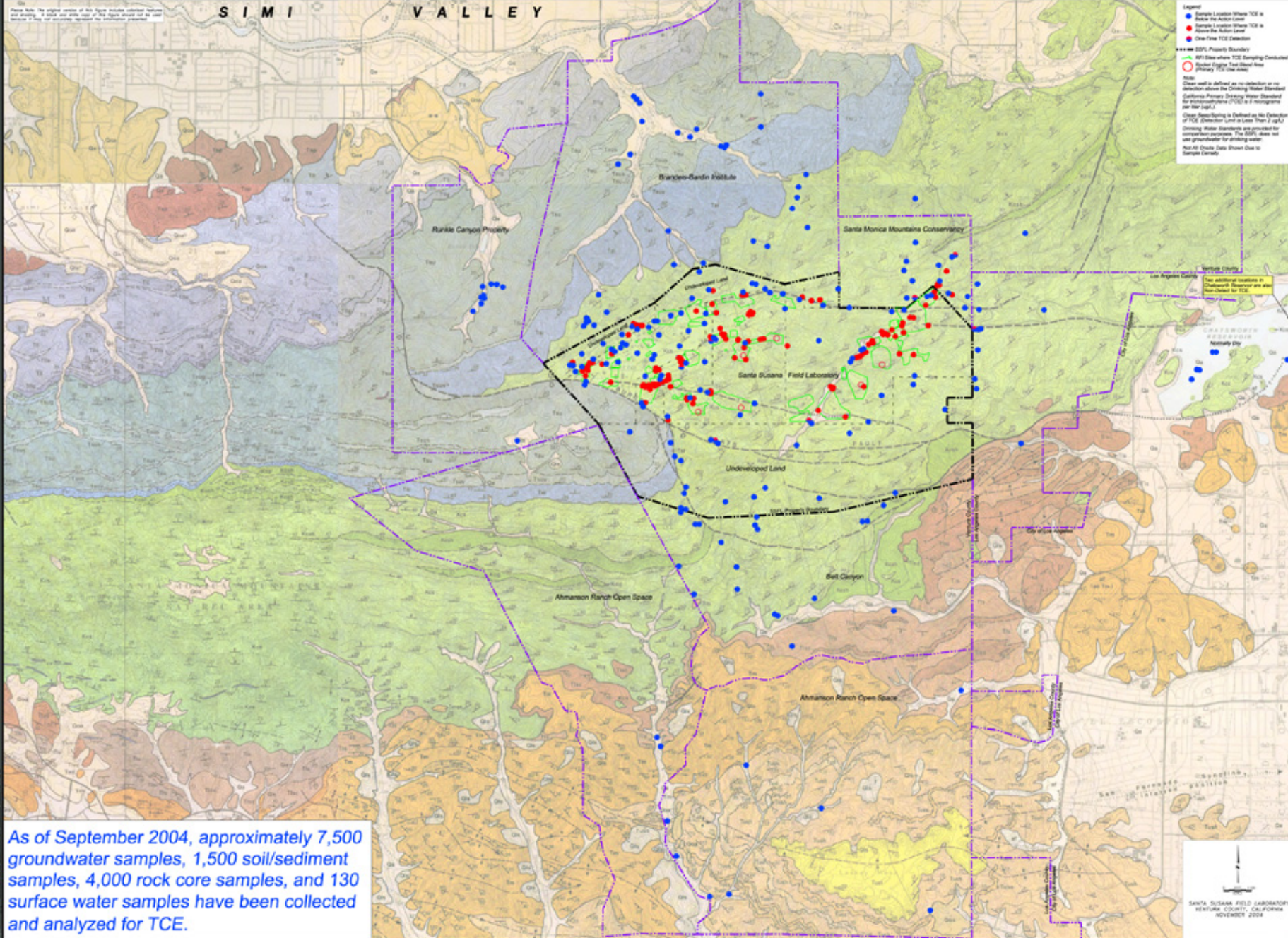


Where Have Trichloroethylene (TCE) Samples Been Collected at and Around the SSFL?

These data are the original version of this figure available on the internet. It is not a certified copy of this figure and is not intended to be used for legal or regulatory purposes.



As of September 2004, approximately 7,500 groundwater samples, 1,500 soil/sediment samples, 4,000 rock core samples, and 130 surface water samples have been collected and analyzed for TCE.