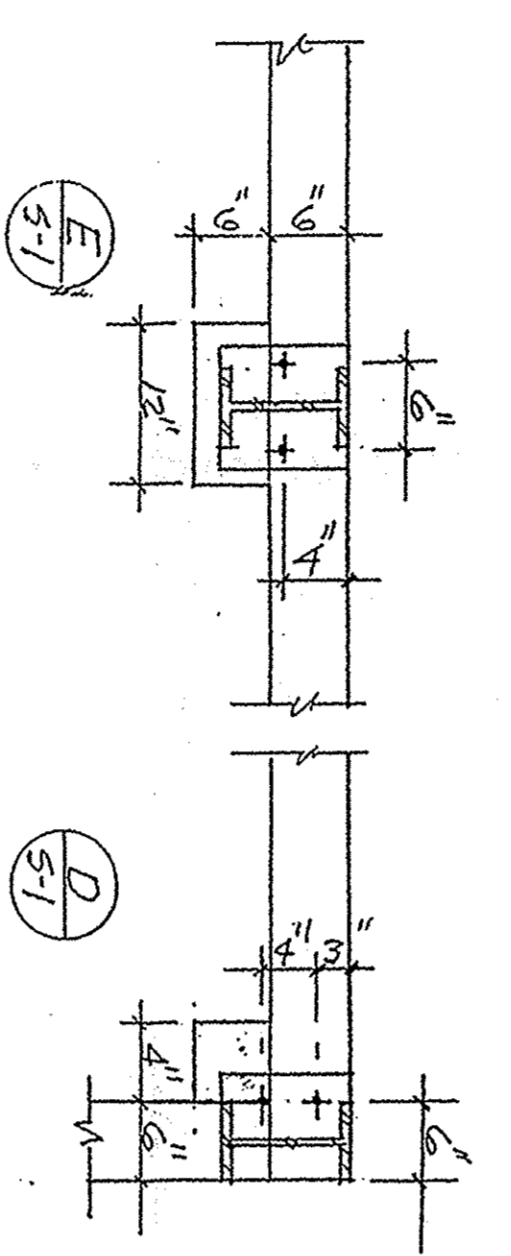
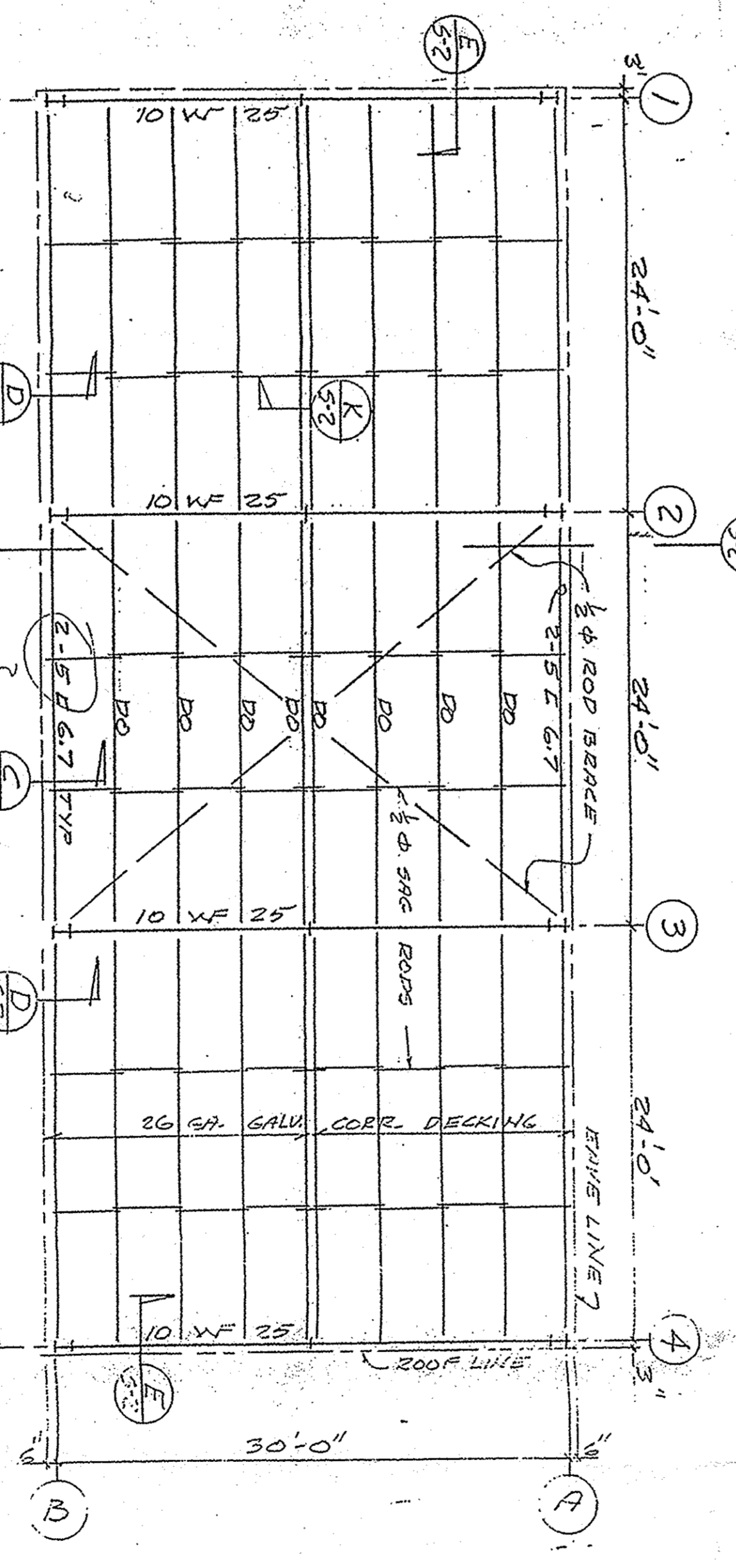
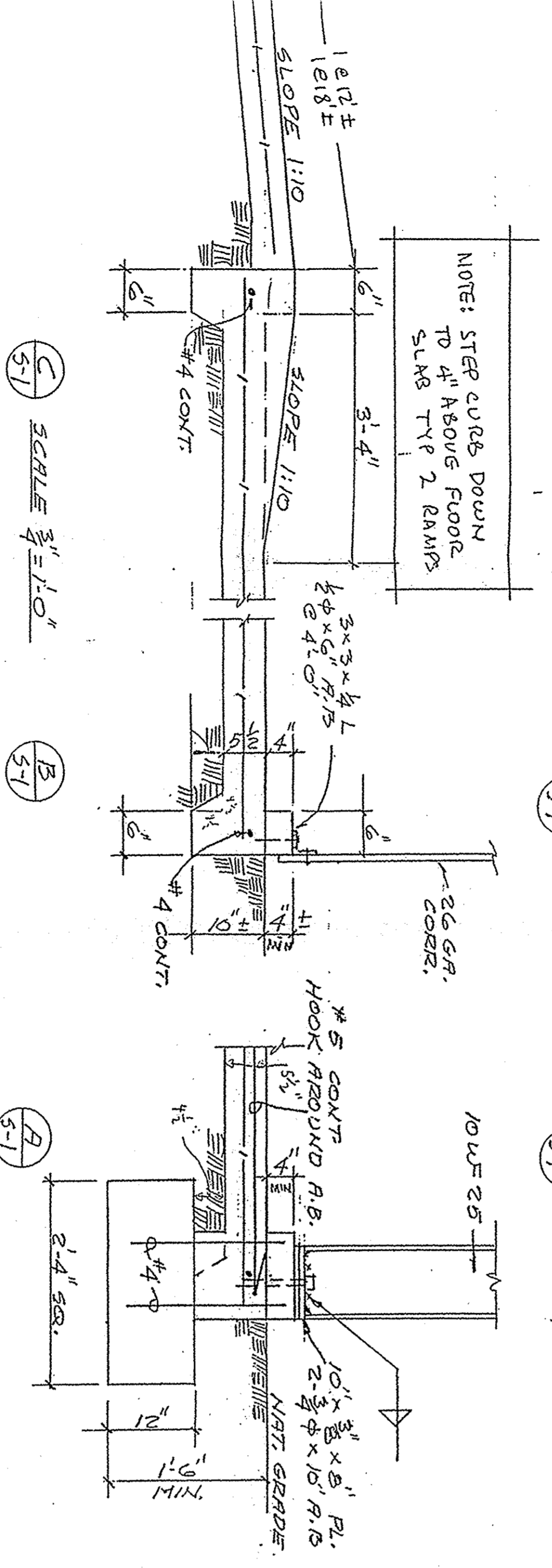


NORTH ELEVATION SCALE 8" = 1'-0"

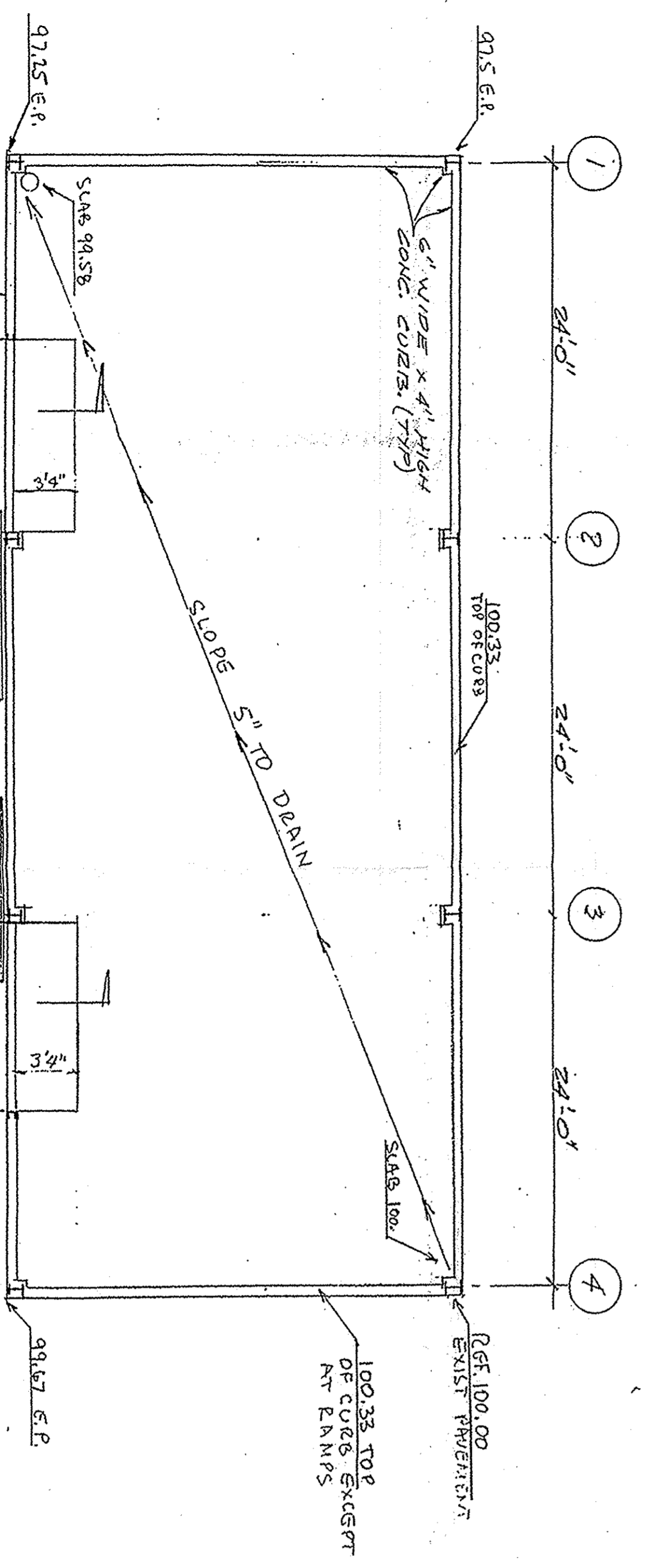
REV	DESCRIPTION	DATE	APPROVED
1	ADDED GRADE ELEVATIONS - DIMENSIONS USED		
2	RAMP LENGTH, STEEP CURB, DOWN AT		
3	RAMP, SHOWN FROM CHANGED DATA #15		



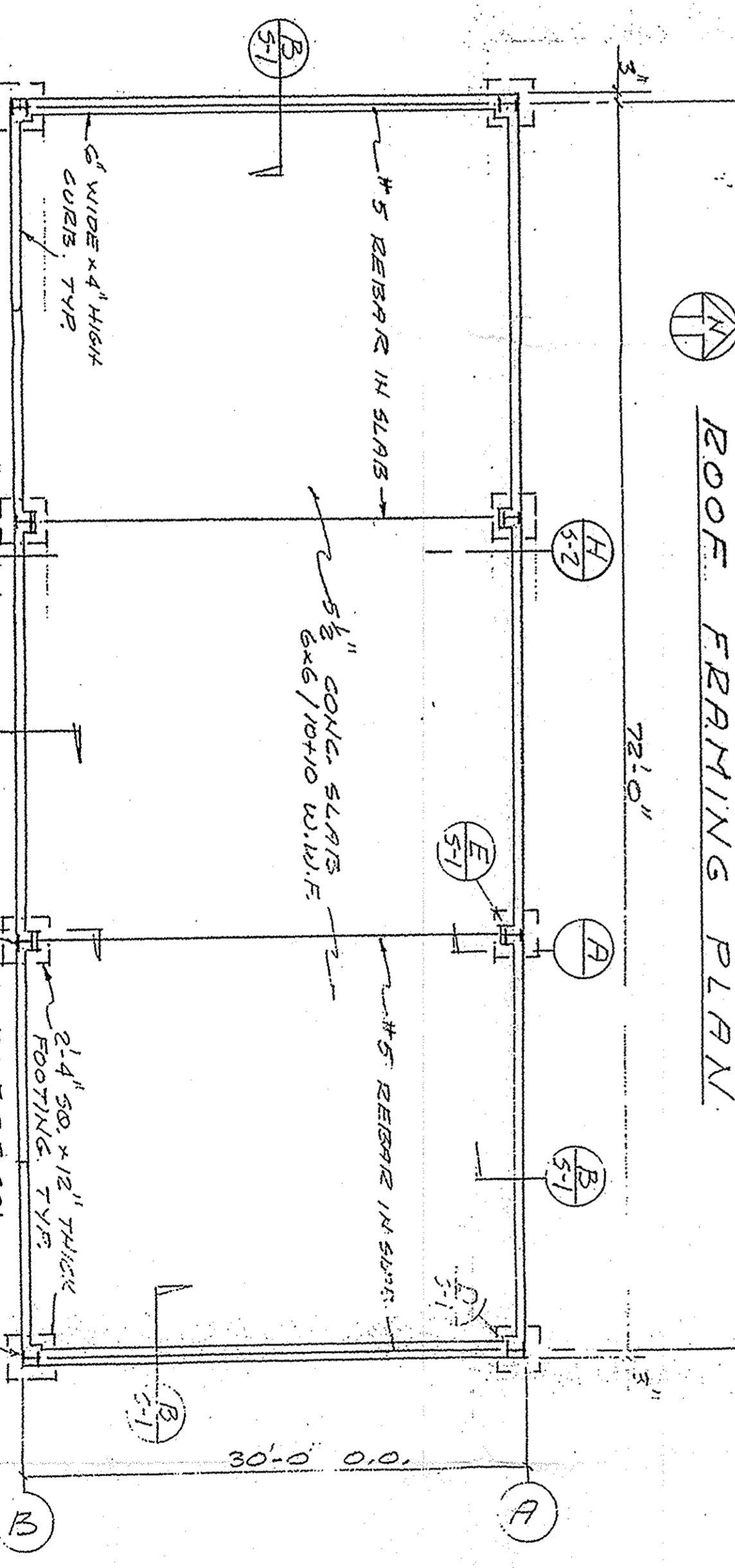
END ELEVATION SCALE 8" = 1'-0"



ROOF FRAMING PLAN



FLOOR PLAN SCALE 8" = 1'-0"



FOUNDATION PLAN SCALE 8" = 1'-0"

- NOTES**
1. CONCRETE SHALL BE MIXED IN BATCH 1:2&1/2:3 WITH 8" MIN. OF 7&1/2" G.O.L. WATER PER BAG OF CEMENT. F.L. = 2000 P.S.I. AT 28 DAYS.
 2. REINFORCING SHALL BE INTERMEDIATE GRADE DETERMINED BY THE CONTRACTOR TO MEET ALL SPEC'S R-15 & R-30'S.
 3. STRUCTURAL STEEL SHALL BE A-36.
 4. WELDING SHALL BE PERFORMED BY CERTIFIED WELDERS IN THE SHOP OF A LICENSED FABRICATOR. FIELD WELDING DESIGNED BY THE STRUCTURAL CONTRACTOR'S INSPECTION IS NOT REQUIRED.
 5. SOIL: BENTON'S PRESSURE = 1500 P.S.F. AT 18" PER R.I.T.

NOTE - VERIFY ALL DIMENSIONS ON JOB SITE

REVISED 03/97

ATOMICS INTERNATIONAL
A DIVISION OF NORTH AMERICAN AVIATION, INC.
8901 DESOTO AVENUE,
CANYON PARK, CALIF.

CONTAMINATED BLDG. 075

DRAWN	J. FERRACIS (ST)	DWG.	D	303-075-S1
CHECKED	J. FERRACIS (ST)	SITE	D	
ENGINEER	J. FERRACIS (ST)	SCALE	AS SHOWN	
APPROVED		NOYED		

SHEET NO. _____ OF _____