



| | | | | | |
|-----------------|------------------|----------------|------------------|--|------------------------|
| GO NO. 07704 | S/A NO. 44650 | PAGE 1 OF 8 | TOTAL PAGES 8 | REV LTR/CHG NO SEE SUMMARY OF CHG NC | NUMBER N704TI990029 |
|-----------------|------------------|----------------|------------------|--|------------------------|

PROGRAM TITLE

Decontamination and Disposition of Facilities

DOCUMENT TITLE

Radiological Survey Results - Release to Unrestricted Use, SRE Region III

DOCUMENT TYPE

Technical Information

KEY NOUNS

Decontamination

ORIGINAL ISSUE DATE

REL. DATE

5-13-83

APPROVALS

DATE

R. J. Tuttle *R. Tuttle* 4/27/83
 B. F. Ureda *B. F. Ureda* 4/22/83
 C. C. Conners *C. Conners* 4/25/83
 J. M. Marzec
 W. R. McCurnin *W. R. McCurnin* 5/31/83
 M. E. Remley *M. E. Remley* 9 May 83

PREPARED BY/DATE

DEPT

MAIL ADDR

J. H. Wallace
J. H. Wallace

779

T034

IR&D PROGRAM? YES NO
 IF YES, ENTER TPA NO.

DISTRIBUTION

| * NAME | MAIL ADDR |
|------------------|-----------|
| * C. C. Conners | NB02 |
| * J. M. Harris | T055 |
| * J. M. Marzec | T143 |
| * W. R. McCurnin | T020 |
| * M. E. Remley | NB13 |
| * R. J. Tuttle | NB13 |
| * B. F. Ureda | NB02 |
| * J. H. Wallace | T034 |

ABSTRACT

The results of the radiological survey for Region III of the SRE facility are described. All survey results are below the applicable limits, indicating that this area may be released for unrestricted use.

"CLEARED FOR PUBLIC RELEASE BY DOE PATENT COUNSEL NOVEMBER 2011"

RESERVED FOR PR

THIS REPORT MAY NOT BE PUBLISHED WITHOUT THE APPROVAL OF THE DOE OFFICE OF PATENT COUNSEL

This report was prepared as an account of work sponsored by the United States Government. Neither the United States nor the United States Department of Energy, nor any of their employees, nor any of their contractors, subcontractors, or their employees, makes any warranty, express or implied, or assumes any legal liability or responsibility for the accuracy, completeness or usefulness of any information, apparatus, product or process disclosed, or represents that its use would not infringe privately owned rights.

0055Y/reg

* COMPLETE DOCUMENT
 NO ASTERISK. TITLE PAGE/SUMMARY OF CHANGE PAGE ONLY



CONTENTS

| | Page |
|------------------------------|------|
| 1.0 Introduction..... | 3 |
| 2.0 Surveys and Results..... | 7 |
| 3.0 Conclusions..... | 8 |

TABLES

| | |
|---|---|
| 1. Contamination/Radiation Limits..... | 5 |
| 2. Survey Measurement Requirements..... | 6 |

FIGURES

| | |
|----------------------|---|
| 1. SRE Facility..... | 4 |
|----------------------|---|



1.0 INTRODUCTION

This document covers Region III of the SRE facility (Figure 1). The area adjoins Building 163 (CERF) and comprises the entrance approach to the SRE complex.

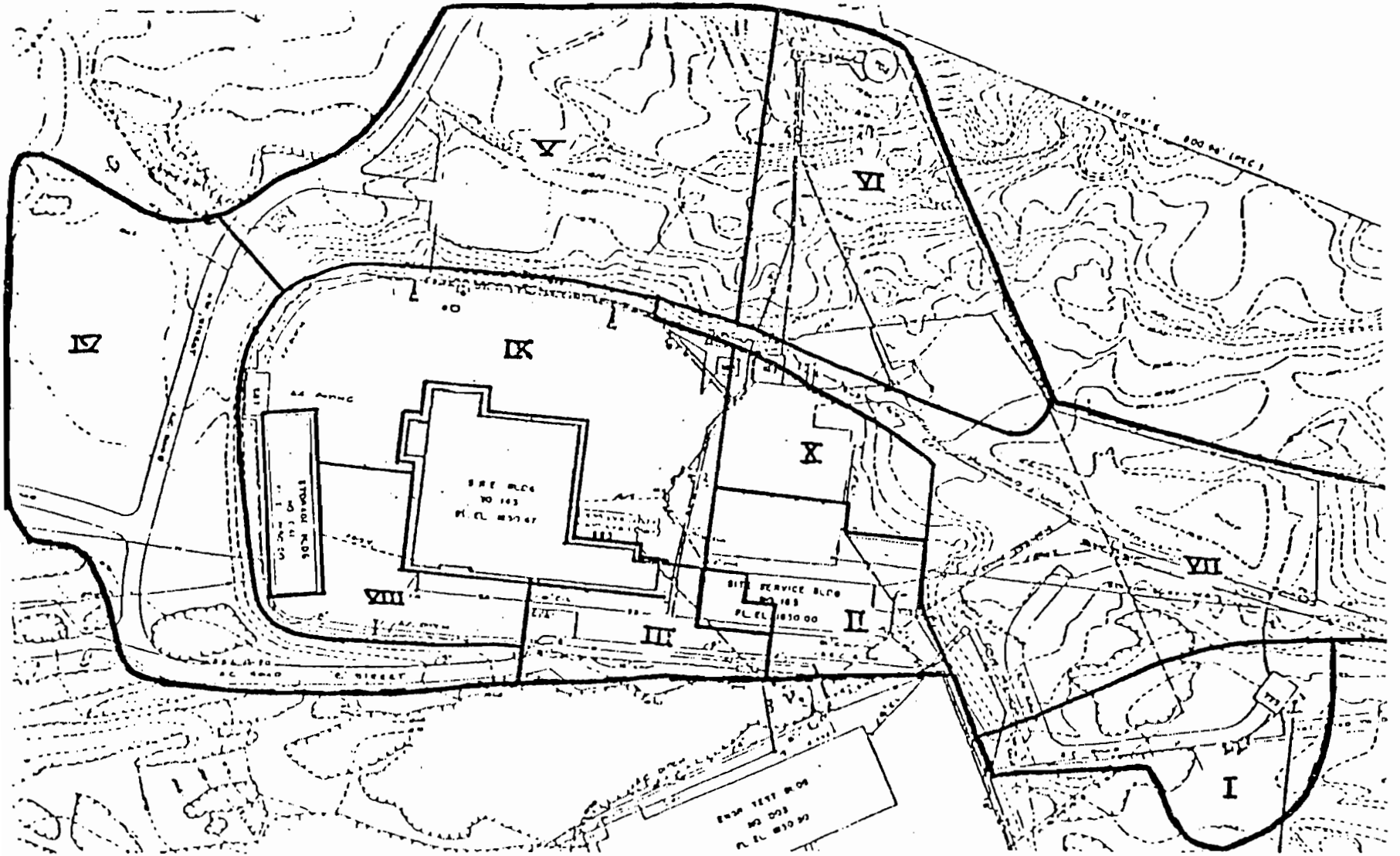


FIGURE 1
SRE FACILITY



The contamination/radiation limits for unrestricted use that were applied in decontaminating this area are shown in Table 1, and the requirements for survey measurements in each region are shown in Table 2.

TABLE 1
RESIDUAL RADIOACTIVITY LIMITS
FOR RELEASE FOR UNRESTRICTED USE

| | Total | Removal |
|-----------------|---|-----------------------------|
| <u>Surfaces</u> | | |
| Alpha | 100 dpm/100 cm ² | 20 dpm/100 cm ² |
| Beta | 0.1 mrad/hr at 1 cm through 7 mg/cm ² absorber | 100 dpm/100 cm ² |
| <u>Soil</u> | 100 pCi/g gross detectable beta | |



TABLE 2
SURVEY MEASUREMENT REQUIREMENTS

| Region | Removal Contamination | Surface Radiation | Soil Samples | Concrete Samples | Water Samples |
|--------------|-----------------------|-------------------|--------------|------------------|---------------|
| I | X | X | X | X | X |
| II | X | X | X | | |
| III | | X | | | |
| IV | X | X | X | | |
| V | | X | X | X | |
| VI | | X | X | | |
| VII | | X | X | | X |
| VIII | | X | | | |
| IX | X | X | X | | |
| X | X | X | X | | |
| 041 | X | X | | | |
| 063 | X | X | | | |
| 143 Offices | X | X | | | |
| 143 High Bay | X | X | X | X | X |

Measurements of removable contamination are omitted from those areas that consist solely of soil or asphalt-paved surfaces



2.0 SURVEYS AND RESULTS

A. SURFACE RADIATION

At the conclusion of the D&D effort, a survey was conducted using three survey instruments, a Technical Associates Model CP-7 ion chamber, a Ludlum Model 12 with a thin-window pancake GM detector, and an Eberline Model PRM-5-3 low-energy gamma detector. The Ludlum GM detector and Eberline low-energy detector were used for their faster response and audible output. The CP-7 showed an average reading of 0.04 mrad/h for Region III which is a typical reading in all uncontaminated areas at Santa Susana. All readings with the CP-7 were below the Table 1 limit of 0.1 mrad/h. Surveys were performed as specified in N704TP99008, "Radiological Survey Plan, Support of D/D Program Operation at T143, SRE," R. K. Owens. Copies of survey results and data sheets are retained by Radiation and Nuclear Safety.



3.0 CONCLUSIONS

In each type of test performed, all samples indicated levels less than those limits prescribed by the Decontamination and Disposition of Facilities Program for release for unrestricted use.

All appropriate surveys indicate that current existing radioactivity in the area is below the applicable limits for release for unrestricted use.