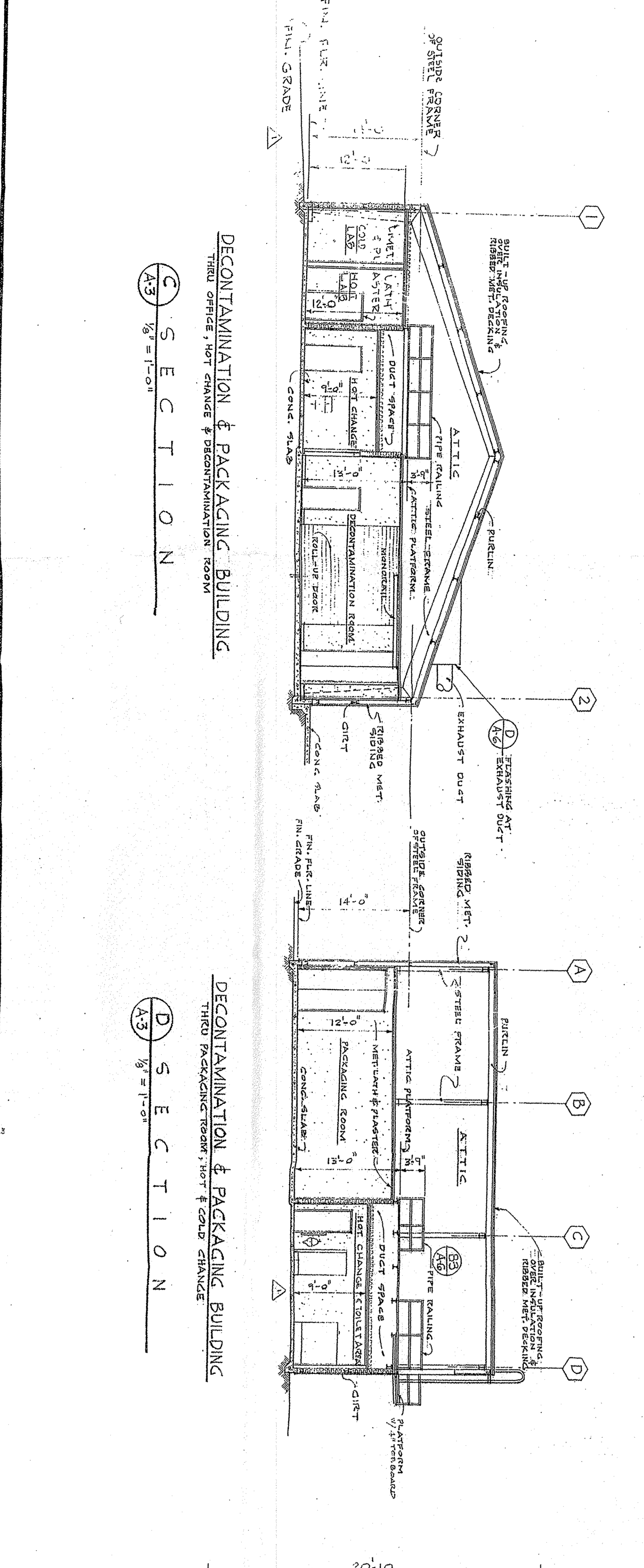
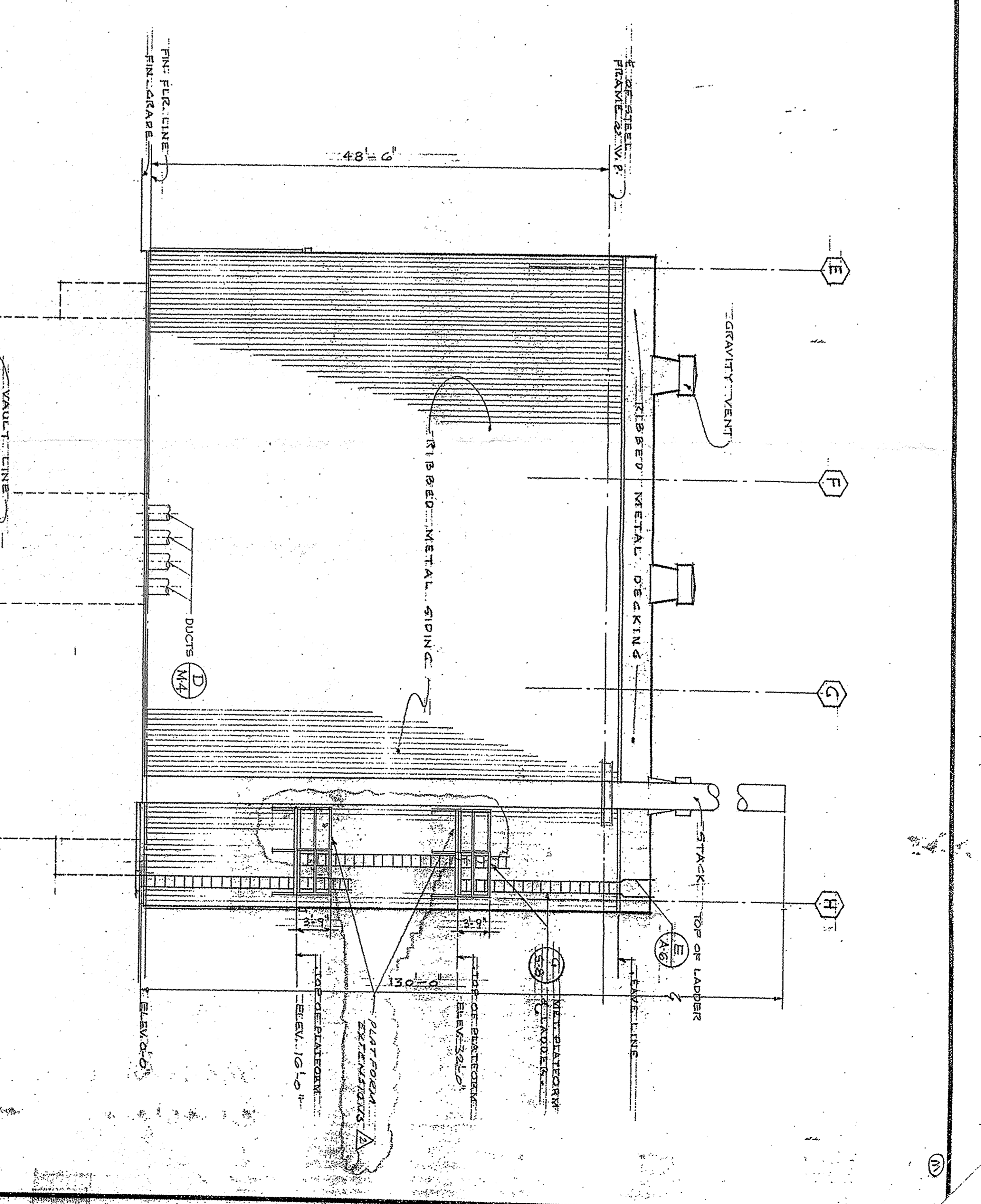


A NORTH ELEVATION
 1/8" = 1'-0"

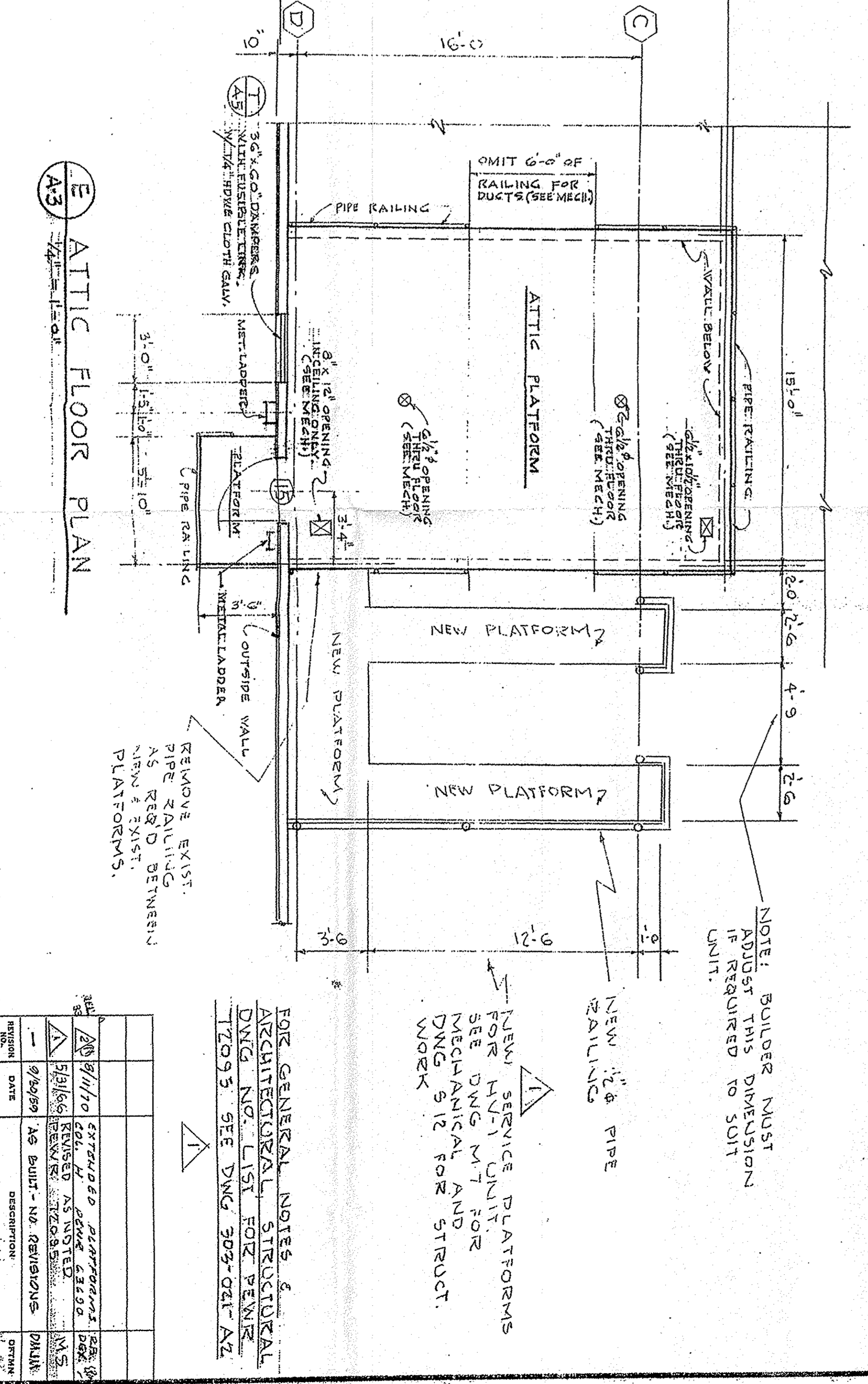
B WEST ELEVATION
 1/8" = 1'-0"



C SECTION
 1/8" = 1'-0"

D SECTION
 1/8" = 1'-0"

E ATTIC FLOOR PLAN
 1/8" = 1'-0"



NOTE: BUZZER MUST BE INSTALLED IN UNIT.
 NEW 1/2" PIPE RAILING.
 NEW SERVICE PLATFORMS FOR DNG MTR FOR MECHANICAL AND DNG S/R FOR STRUCT. WORK.

FOR GENERAL NOTES & ARCHITECTURAL STRUCTURAL DNG NO. LIST FOR REVIEW 17093. SEE DNG 909-021A2.

APPROVED: U.S. ATOMIC ENERGY COMMISSION
 DANIEL, MANN, JOHNSON, & WENDENHALL ARCHITECTS & ENGINEERS
 332 WILSHIRE BOULEVARD - LOS ANGELES 5, CALIFORNIA - TELEPHONE DUNKIRK 1-3663

U.S. ATOMIC ENERGY COMMISSION
 CHICAGO OPERATIONS OFFICE

H/A WASTE AND FUEL STORAGE
 SANTA SUSANA, CALIFORNIA

ELEVATIONS, SECTIONS, & ATTIC PLAN

303-0221A3