

# Historical Site Assessment Santa Susana Field Laboratory Area IV

## Methodology

### How was the HSA Completed?

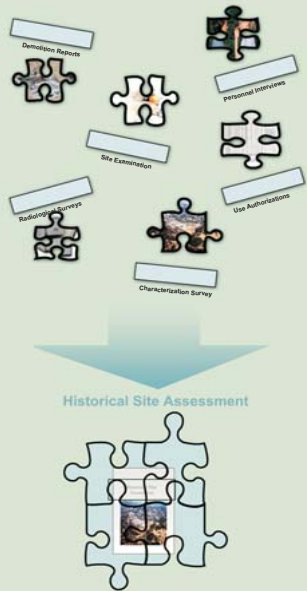
- Information was gathered from multiple sources, such as personal interviews, use authorizations, incident reports, site inspections, facility maps, historical photos and previous radiological surveys
- All Area IV structures past or present, government or company owned and areas of contamination, were defined as "sites"
- Site summaries were prepared for each of the 272 sites

### What is a Historical Site Assessment?

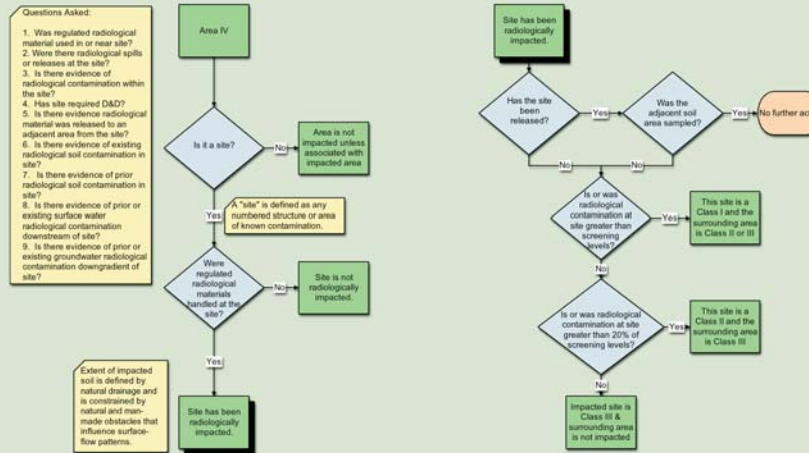
An HSA describes a site's radiological history from the start of activities to the present time.

The Historical Site Assessment...

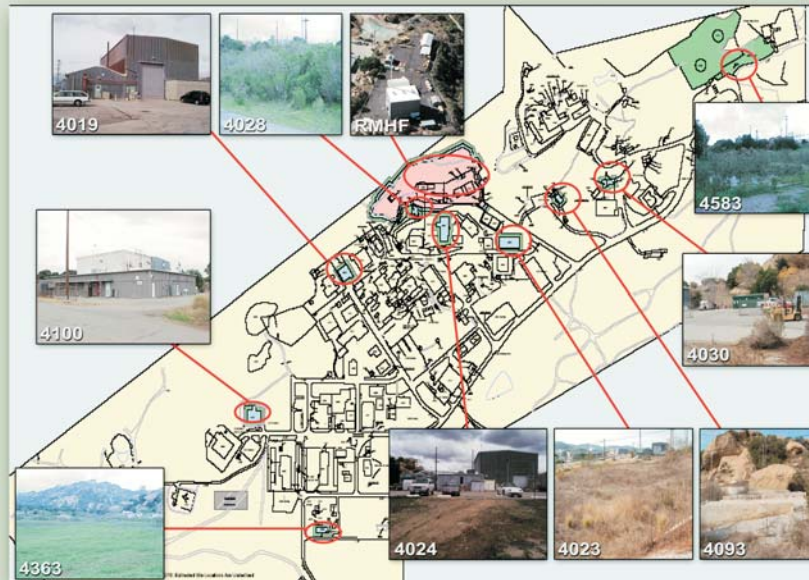
- Identifies sites
- Reviews historical operations
- Describes current conditions
- Classifies sites for radiological impact



## Which Areas IV Sites are Impacted?



## Additional Soil Sampling To Be Completed



## Results

### Results of the HSA

- 272 sites were identified in Area IV:
  - 177 non-impacted
  - 95 impacted
    - 70 require no further action
    - 25 require additional soil sampling

Site summaries, like this have been completed for all 272 Area IV sites.

### Site Identification:

- Any name used for the site (site purpose and association changed over time, resulting in several different names). Includes any additional support structures used to service the building not warranting an individual site summary (e.g., substations, guard shacks, time clock structures and construction shacks).

### Operational Use/History:

- The date and site was constructed, programs the site supported, dates these programs were operating, deactivation/decontamination activities, and demolition date.

### Site Description:

- A physical description of the site and any holding tanks or other below ground structures, leachfield, or air filter structure (stacks, HEPA filtration) associated with the site.

### Relevant Site Information:

- Type of radiological material managed at the site, use authorizations, and any incidents that would have resulted in potential releases to the environment.

### Radiological Surveys:

- Radiological surveys performed at the site, description of survey purpose (routine, characterization, final status, verification), date conducted, agency conducting the survey, survey scope (e.g., interior, exterior), measurements collected, acceptable limits for the survey, and survey results.

### Status:

- Site release date and releasing agency (if applicable), and demolition date or current use.

### References:

- Documents, maps, photographs, personal interviews, review of RSRMS, or any other information used to develop the site summary.